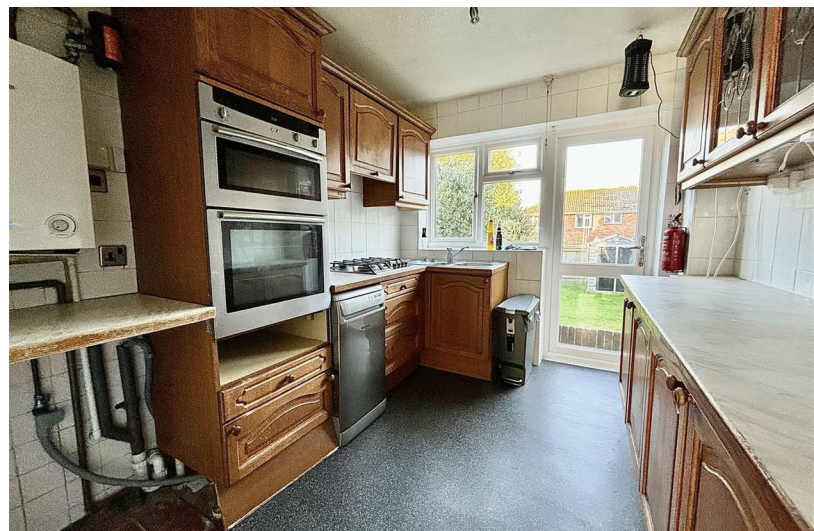


6

BED

Spacious and Versatile Accommodation

99, Dorothy Avenue North, Peacehaven, BN10 8DP

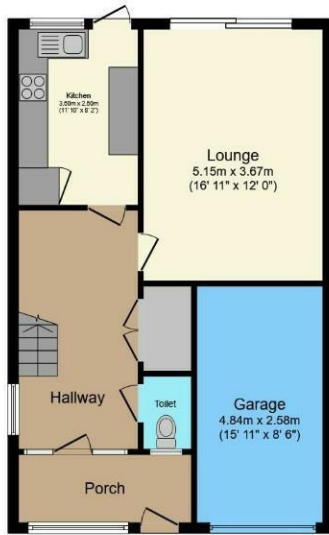


Offers Over £380,000

Freehold

phillipmann
we do more

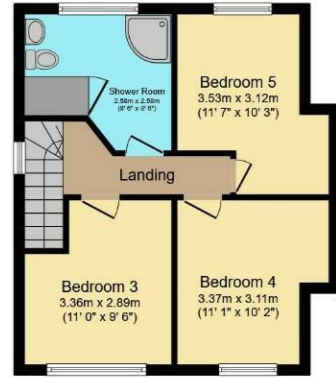
www.phillipmann.com



Ground Floor



First Floor



Second Floor

Total floor area 158.4 m² (1,705 sq.ft.) approx

This floor plan is for illustrative purposes only. It is not drawn to scale. Any measurements, floor areas (including any total floor area), openings and orientation are approximate. No details are guaranteed, they cannot be relied upon for any purpose and they do not form part of any agreement. No liability is taken for any error, omission or misstatement. A party must rely upon its own inspection(s).
Powered by www.focalagent.com

inbrief...

Are you looking for a spacious house in a central location that you can move straight into? Then look no further than this super, spacious family home which will tick most if not all off of your property's wish list. Not only are there numerous rooms and will offer enough space for most sized families it also offers versatility or possible annexe style accommodation, if required. The property has been in the same family's tenure for many years and is now offered with no chain. Located towards the center of Peacehaven you will find it is positioned within walking distance of the local shop, the south coast road with its regular bus service to Brighton, as well as local primary and secondary schools. Furthermore a little further away you will find open fields, the clifftop promenade and access to the beach.

You are greeted by the sizable entrance hall and then into the spacious hallway where storage options and a cloakroom/wc are located. The spacious lounge is located to the rear and offers plenty of room for all of your soft furnishings and associated furniture. Patio doors to the rear, overlook and access the well presented and sizable rear garden. Located adjacent is the fitted kitchen which offers plenty of units for storage, contrasting work surfaces and space for all of the normal appliances. Moving upstairs you will find two double and one single bedrooms. The bedrooms are serviced by the shower room/wc which incorporates a shower cubicle, wc and basin. A further staircase rises from the first floor landing to the second floor landing where a further 3 bedrooms are positioned. A second shower room/wc services these bedrooms.

Externally you will find a low maintenance front garden, off-road parking and access to the integral garage which is ideal for the family car or just for storage. The well presented rear garden offers a level lawn with some mature shrubs which offer interest. This is the ideal spot for the adults to relax in and the children to play.



EPC Rating - D
Council Tax - D

moreinfo...



Phillip Mann Peacehaven Office
226-230 South Coast Road, Peacehaven, BN10 8JR
01273 586622

To see more details on this & all our homes go to
www.phillipmann.com