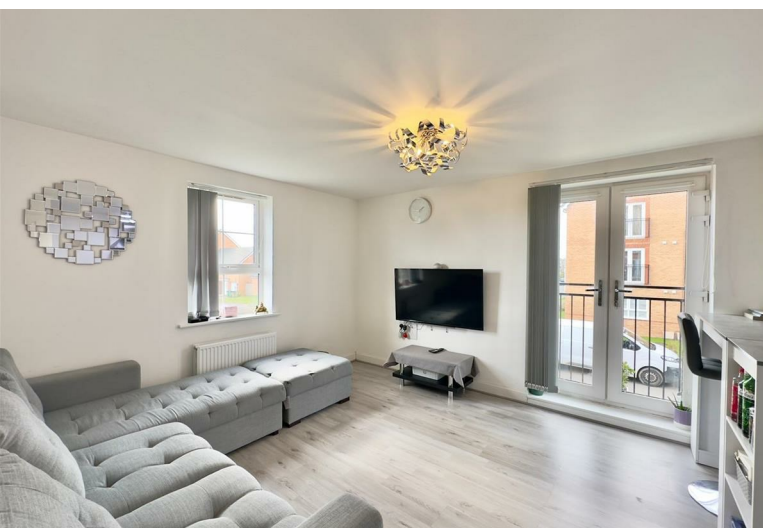


2
BED

Spacious First Floor Apartment

Flat 4, 45, Skylark Avenue, Peacehaven, BN10 8FP



Price £249,950

Leasehold

phillipmann
we do more

www.phillipmann.com



inbrief...

Phillipmann Estate Agents are delighted to offer for sale this MODERN first floor flat which offers SPACIOUS accommodation throughout. At just over TWO YEARS OLD, this property is situated in a highly desirable area with good links to public transport. This property would be ideal for first time buyers or someone looking to downsize.

Stairs to first floor leads to private entrance of flat 4. The entrance hall features, cloaks cupboard with plumbing for washing machine.

Both bedrooms are good sized double rooms. Bedroom one benefits from a fully tiled ensuite shower room. The bathroom is a fantastic size and features; bath with mixer tap, pedestal wash basin, tiled walls and w/c.

The double aspect open planned living area has ample room for all soft furnishings with juliet balcony and french doors to front. The kitchen is fitted with a range of wall and base units with a complementing working surface. Features include; undercounter oven with 4-way gas hob and overhead extractor, integral dishwasher and space for fridge freezer, breakfast bar and enclosed combination boiler.

Room sizes:

Lounge / Kitchen / Dining Room: 19'5 x 11'8

Bedroom 1: 13'4 x 9'10

Bedroom 2: 11'9 x 8'10

Bathroom: 7'2 x 6'5

Allocated parking

Lease - Remainder of 999 years from 2022

Service Charge & Ground Rent - circa £125p/m



Council Tax - B

EPC - B

moreinfo...

Phillip Mann Peacehaven Office

226-230 South Coast Road, Peacehaven, BN10 8JR

01273 586622

To see more details on this & all our homes go to www.phillipmann.com

