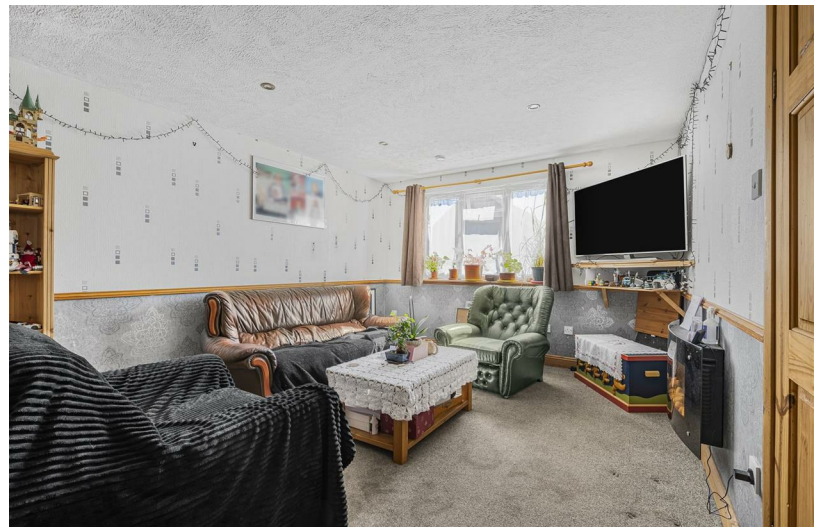


5  
BED

# Deceptively Spacious, Versatile Family Home

32, Collingwood Close, Peacehaven, BN10 8BG



Price £299,999

Freehold

**phillipmann**  
we do more

[www.phillipmann.com](http://www.phillipmann.com)

32 Collingwood Close, BN10 8BG  
 Approximate Gross Internal Floor Area = 125.59 sq m / 1352 sq ft

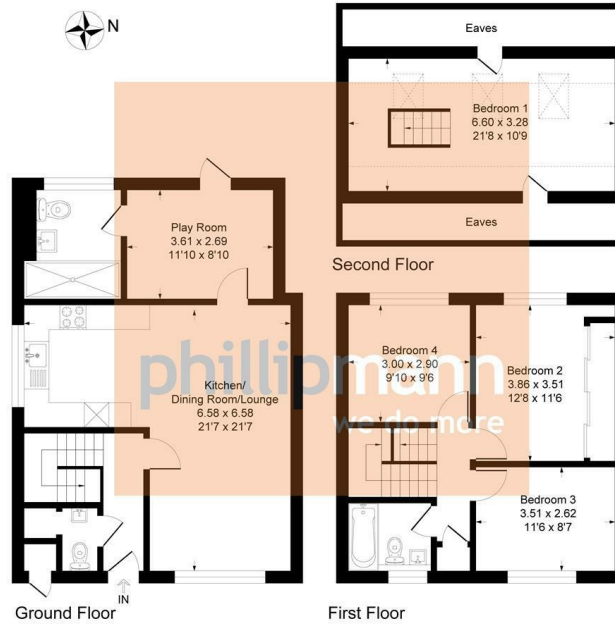


Illustration for identification purposes only, measurements are approximate, not to scale

inbrief...

Are you looking for a spacious family home? If so then this is the one for you! Grab this fantastic chance to acquire this extended and versatile family home and is the perfect choice for a first time or investment purchase. Located centrally in Peacehaven you will find all of the town's amenities close by alongside schools for all ages and bus routes to Brighton too. The front door opens into the entrance hall where you will find a built-in storage cupboard and stairs that rise to the first floor. The generous open plan lounge/diner/kitchen offers plenty of space for your soft furnishings, associated furniture and a dining table and chairs. The modern re-fitted kitchen area offers plenty of matching units, contrasting work surfaces and plenty of appliance space too. A door to the rear offers access into a ground floor bedroom which also boasts an adjoining and very spacious en-suite shower room. The shower room comprises of a shower, wc and basin. Of course the bedroom has the versatility of becoming a play room, office or a second reception - the choice will be yours. A door from here overlooks and affords access into the west facing rear garden. Moving upstairs you will note the spacious landing alongside a built-in storage cupboard. There are three generous bedrooms on offer with the master offering built-in storage. One is located to the front with the other two overlooking the rear garden. Completing the internal set up is the bathroom/wc which comprises of a white suite including a low level wc, wash basin and bath all of which are complimented by contrasting tiling. A staircase from the first floor landing rises to the second floor where a fifth bedroom is located. Externally you will find a pleasant low maintenance west facing rear garden which is arranged with a large patio, raised flower beds and all is enclosed by timber fencing. The aspect will certainly appeal to all those sun lovers who will enjoy the afternoon sunshine.

\*\* Service Charge Applies



EPC Rating - E  
 Council Tax Band - B

moreinfo...



Phillip Mann Peacehaven Office  
 226-230 South Coast Road, Peacehaven, BN10 8JR  
 01273 586622

To see more details on this & all our homes go to  
[www.phillipmann.com](http://www.phillipmann.com)