

3  
BED

# Spacious Bungalow with Distant Views

28, Telscombe Road, Peacehaven, BN10 8AG



Price £380,000

Freehold

**phillipmann**  
we do more

[www.phillipmann.com](http://www.phillipmann.com)

28 Telscombe Rd, BN10 8AG  
 Approximate Gross Internal Floor Area = 85.6 sq m / 921 sq ft  
 Garage Area = 14.9 sq m / 161 sq ft  
 Total Area = 100.5 sq m / 1082 sq ft

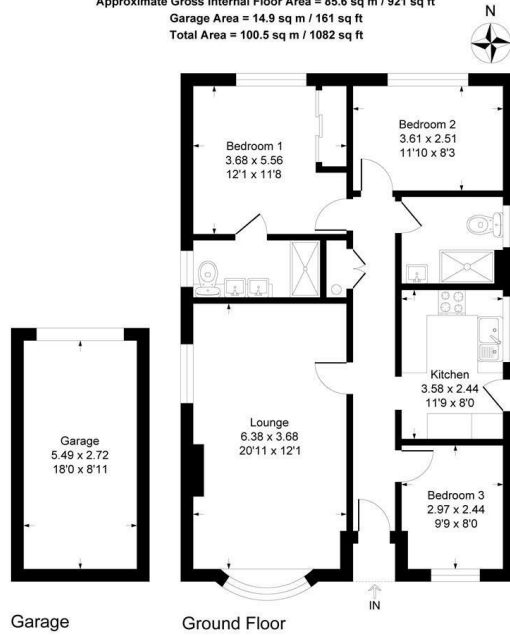


Illustration for identification purposes only, measurements are approximate, not to scale.

## inbrief...

Phillipmann estate agents are delighted to offer for sale this three bedroom DETACHED BUNGALOW situated in a POPULAR LOCATION close to local schools, convenience store and main bus links to Brighton and beyond. Furthermore, open fields and beautiful countryside walks are also right on your doorstep.

The spacious entrance hall features; laminate flooring, airing cupboard with tank and shelving and hatch to loft space. The generous double aspect lounge dining room has ample space for all furniture and features, electric fire with surround and bay window to front.

The kitchen is fitted with a range of wall and base cupboards with complementing working surface. Features include; inset sink drainer with window and door to side, wall mounted boiler and space for cooker, washing machine and fridge freezer.

Both bedrooms one and two are double rooms with uninterrupted distant views to rear. Bed 1 also features an ample ensuite which comprises; dual sinks set into storage and w/c unit and large shower tray. Bedroom three is a useful additional single room/study with window to front. The main shower room features; large shower tray, sink with storage, w/c part paneled walls and frosted window to side

The rear garden has been tastefully landscaped and features; lawn covering with a variety of stocked and low maintenance borders, patio area, lawn covering outside tap and rear gate to garage and off road parking.

NO CHAIN



Council Tax - D

EPC - C

moreinfo...



Phillip Mann Peacehaven Office  
 226-230 South Coast Road, Peacehaven, BN10 8JR  
 01273 586622

To see more details on this & all our homes go to  
[www.phillipmann.com](http://www.phillipmann.com)