

2
BED

Level Plot Bungalow in a Central Location

111, Phyllis Avenue, Peacehaven, BN10 7RG

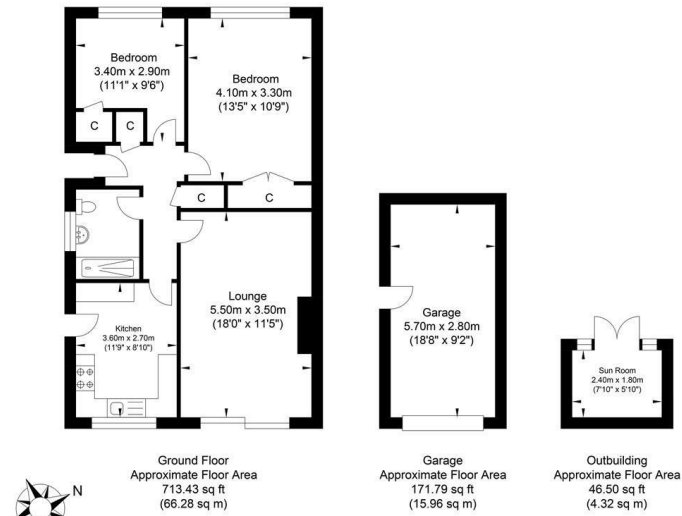


Price £315,000

Freehold

phillipmann
we do more

www.phillipmann.com



Approximate Gross Internal Area (Excluding Sun Room) = 82.24 sq m / 885.22 sq ft
 Illustration for identification purposes only, measurements are approximate, not to scale.

inbrief...

Phillipmann estate agents are delighted to offer for sale this 2 bedroom semi detached bungalow situated in a popular, central residential area of Peacehaven within a short walk to the Meridian Shopping Centre, local schools and main bus routes to Brighton/Eastbourne.

As you approach the property, benefits include front garden, ample off street parking, garage with power, lighting and updated flat roof (2024). The entrance hall features; usefull cloaks cupboard, laminate flooring, further airing cupboard with tank and shelving and hatch with fitted ladder to boarded loft space.

Bedroom one is a good size double room with inset wardrobes and window to front. Bedroom two is also a double room to front with an inset cupboard. The fitted wet room features; walk in shower, sink with storage, w/c, ladder radiator, tiled walls and frosted window to side. The living dining room features; space for all furniture, electric fire with wooden surround, tv point and sliding door to rear garden.

The kitchen is fitted with a range of wall and base cupboards with complementing working surface. Features include; 1 1/2 inset sink drainer with window overlooking garden, double oven with 5-way gas hob and overhead extractor, space for fridge freezer, tumble dryer and washing machine, wall mounted boiler, tiled floor and splash back, breakfast bar and door to side.

The immaculate, east facing rear garden has been tastefully landscaped and features; lawn covering with shingle borders, summer house and additional storage shed, outside tap, garage and side access.

NO CHAIN
 PROBATE GRANTED
 VIEWINGS ADVISED



Council Tax - C

EPC - C

moreinfo...



Phillip Mann Peacehaven Office
 226-230 South Coast Road, Peacehaven, BN10 8JR
 01273 586622

To see more details on this & all our homes go to
www.phillipmann.com