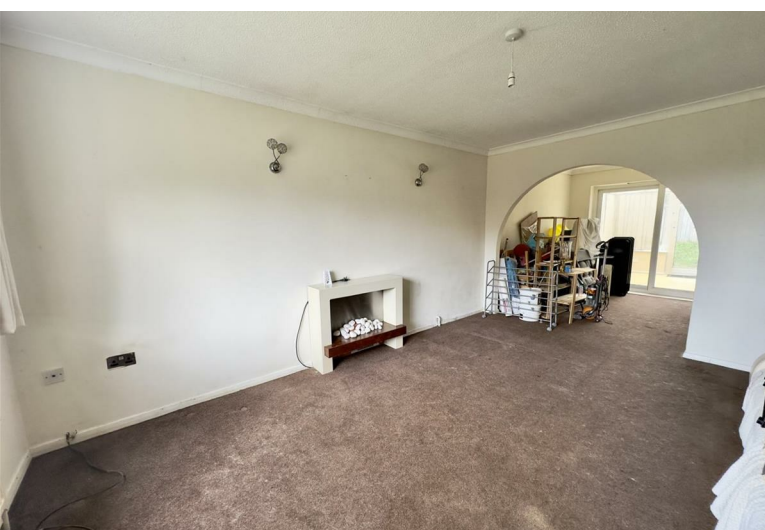


3  
BED

# Family House with No Chain

50, Stanley Road, Peacehaven, BN10 7SP



Price £290,000

Freehold

**phillipmann**  
we do more

[www.phillipmann.com](http://www.phillipmann.com)



## inbrief...

Phillip Mann estate agents are pleased to bring to market this bright and spacious, semi-detached family home located in this small family orientated close, on the cusp of the Peacehaven/Telscombe Cliffs border. Situated within walking distance of Chatsworth Park, local school, shop and bus links to Brighton and beyond, this is a perfect home to raise your growing family and for dog walkers and nature lovers the South Downs National Park is just a short stroll away.

As you enter this home you are welcomed into the entrance hall, and you will immediately appreciate the flow this home has to offer. A dual aspect lounge/dining room is located off of the entrance hall and runs the full depth of the property. This has a lovely southerly aspect window to the front and patio doors at the rear which gives a great view and access to the garden via the conservatory. There is a spacious lounge area which will easily fit good sized furniture and the dining room has plenty of space for a family sized dining table. To the rear of the property is a good sized conservatory which provides additional living space to the home. Access is then gained into the kitchen which offers ample work surfaces, drawers and cupboards for storage.

Upstairs the house continues with two good sized doubles, which both have built in wardrobe space and one single bedroom. Also on this floor is a family bathroom/WC which completes the accommodation.

Externally there is an open plan front garden and to the rear there is a level garden which has lawn area and hard standing for patio furniture. The home has the added benefit of a garage, which is located nearby with parking for an additional vehicle in front of it. The property is offered with NO ONWARD CHAIN, so moving could be quicker than you think.

EPC - D



Council Tax - C

EPC - D

moreinfo...

Phillip Mann Peacehaven Office  
226-230 South Coast Road, Peacehaven, BN10 8JR  
01273 586622



To see more details on this & all our homes go to  
[www.phillipmann.com](http://www.phillipmann.com)