

2  
BED

# Stunning House With Amazing Views

10, St Leonards Close, Newhaven, BN9 0RW



Price £295,000

Freehold

**phillipmann**  
we do more

[www.phillipmann.com](http://www.phillipmann.com)



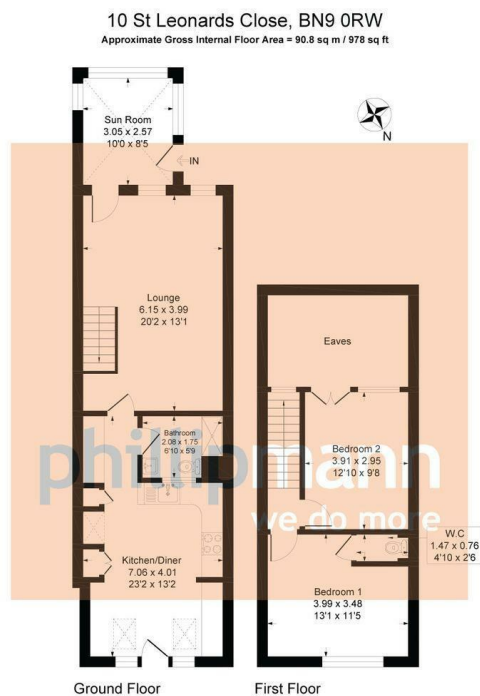


Illustration for identification purposes only, measurements are approximate, not to scale

## inbrief...

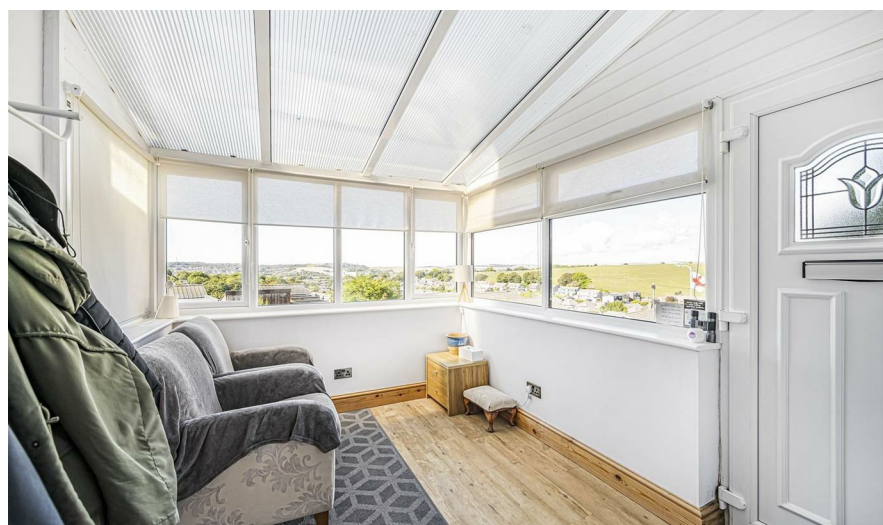
Phillip Mann estate agents are delighted to offer for sale this absolutely stunning two bedroom house located in Denton Village. The property backs directly onto farmland and offers amazing views over the South Downs.

A part glazed entrance door gives access to a large sun room which has windows overlooking the front and side which has the views over local countryside. The lounge/diner is a delightful room which has Polyflor flooring, ample space for a dining table and a window overlooks the front. From here, there is an inner hall which has storage cupboards and doors to the remainder of the downstairs. The extended kitchen/breakfast is a stunning room which has an excellent range of wall and base units incorporating a selection of cupboards and drawers. There is a built in sink unit and there are spaces for American fridge freezer, range cooker with extractor fan above, washing machine, dishwasher and tumble drier. The room is complete with space for breakfast table, continuation of the Polyflor flooring and patio doors gives access and overlooks the rear garden. Completing the ground floor is a fully tiled shower room which has a large shower cubicle, low level WC and wash hand basin.

The first floor landing has a window overlooking the front and doors which leads to the remainder of the accommodation. Bedroom one is a generous size with ample space for wardrobes and a window overlooks the rear garden and fields beyond. A door gives access to a ensuite cloakroom. Bedroom two is also a good size double overlooking the front.

Outside there is a low maintenance rear garden.

The front has the bonus of a private parking space as well as communal parking.



Council Tax Band B

Energy Rating C

moreinfo...



Phillip Mann Newhaven Office  
16 Bridge Street, Newhaven, BN9 9PJ  
01273 517517

To see more details on this & all our homes go to  
[www.phillipmann.com](http://www.phillipmann.com)