

3
BED

Spacious Victorian Terrace Family House

99, Lewes Road, Newhaven, BN9 9SJ

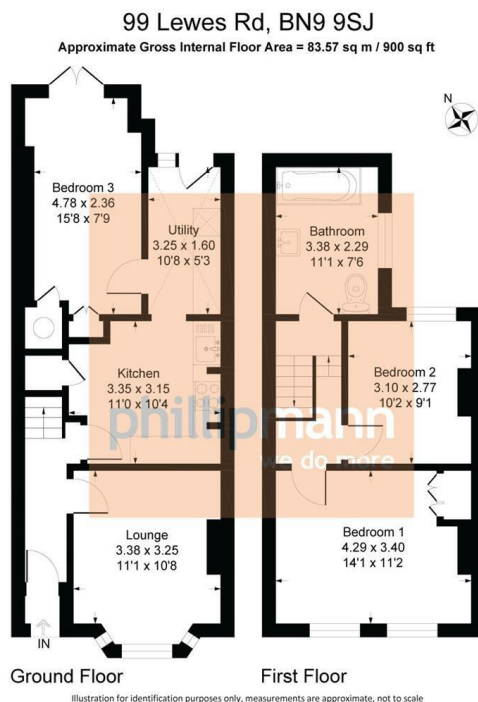


Offers Over £275,000

Freehold

phillipmann
we do more

www.phillipmann.com



inbrief...

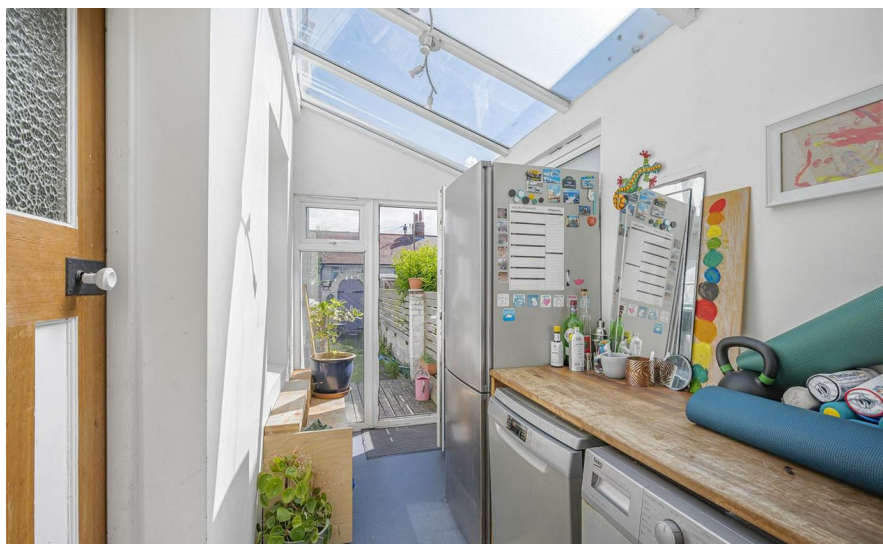
Phillip Mann Estate Agents are delighted to offer for sale this well presented Victorian terrace located close to Newhaven town. The property benefits from gas central heating, double glazing and viewings are recommended to appreciate the period features in the property.

The property is accessed via part glazed entrance door leading into entrance hall. From here, the lounge is situated at the front of the property which is decorated in a modern way with fireplace and bay window. The kitchen is fitted with a range of wall and base units incorporating a selection of cupboards and drawers. A ceramic sink unit is set into modern work surface and there is space for a range cooker, built in shelving, understairs storage cupboard and space for a dining set. Moving through, there is a rear utility area which has space and plumbing for a washing machine, dishwasher and fridge/freezer. Windows and doors overlook and afford access to the rear garden.

Completing the ground floor is bedroom three which is a generous size double and has plenty of versatility being on the ground floor. This room has built in wardrobes and doors giving access to the rear garden.

Stairs rise to the first floor landing giving access to the loft and the remainder of the accommodation. Bedroom one is a spacious room which has a feature fireplace, built in wardrobes and two windows overlooking the front. Bedroom two, again, a double, has a feature fireplace and window overlooking the rear. The family bathroom is fitted with a P shaped bath with mixer tap and waterfall shower, wash hand basin and low flush WC. There are tiled walls and frosted window to the side.

Outside, the rear garden is mainly laid to lawn and patio. There is a rear access gate and timber shed.



Energy Rating D

Council Tax Band B

moreinfo...



Phillip Mann Newhaven Office
16 Bridge Street, Newhaven, BN9 9PJ
01273 517517

To see more details on this & all our homes go to
www.phillipmann.com