

3
BED

Spacious Victorian House - No Ongoing Chain

41, Meeching Road, Newhaven, BN9 9RL



Offers Over £265,000

Freehold

phillipmann
we do more

www.phillipmann.com



inbrief...

Phillip Mann estate agents are delighted to offer for sale this spacious three bedroom Victorian House located in Meeching Road. The property could benefit from some updating but has the potential to make a lovely family home.

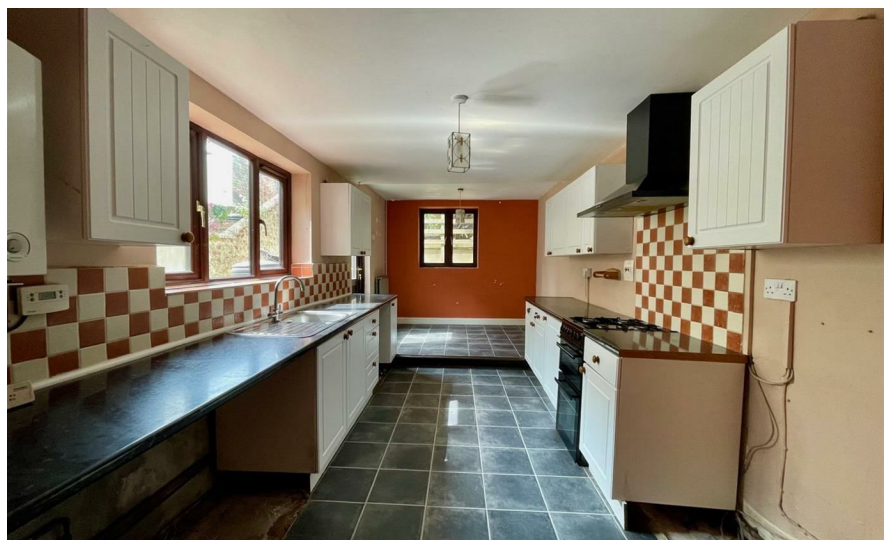
A part glazed entrance door gives access to the hallways which has several storage cupboard and doors which lead to the downstairs accommodation. The lounge is a lovely size room which has a feature fireplace and a bay window overlooking the front of the property. There is also a good size dining room which overlooks the rear garden. Completing the downstairs is a lovely size kitchen/breakfast room which is fitted with a range of wall and base units. There is ample space for appliances, breakfast table and a window which overlooks the rear garden.

The first floor landing has access to a loft space and doors which lead to the remainder of the accommodation. Bedroom one is a spacious room which has a feature fireplace, built in cupboard and a bay window which overlooks the front. Bedroom two and three and both further good size doubles and overlook the rear garden. Completing the inside is a family bathroom which is fitted with a paneled bath, WC and wash hand basin.

Outside there is a delightful rear garden which is mainly laid to patio with a range of establish trees, plants and shrubs. There is rear access to off road parking.

The property is being sold with NO ONGOING CHAIN and viewings come highly recommended to appreciate the potential this property has to offer.

Lounge - 14'8 x 13'4
Dining room - 11'10 x 10'7
Kitchen/breakfast room - 21' x 9'
Bedroom One - 15'10 x 13'
Bedroom Two - 12' x 9'5
Bedroom Three - 9'4 x 9'4



Energy Rating D
Council Tax Band C

moreinfo...



Phillip Mann Newhaven Office
16 Bridge Street, Newhaven, BN9 9PJ
01273 517517

To see more details on this & all our homes go to
www.phillipmann.com