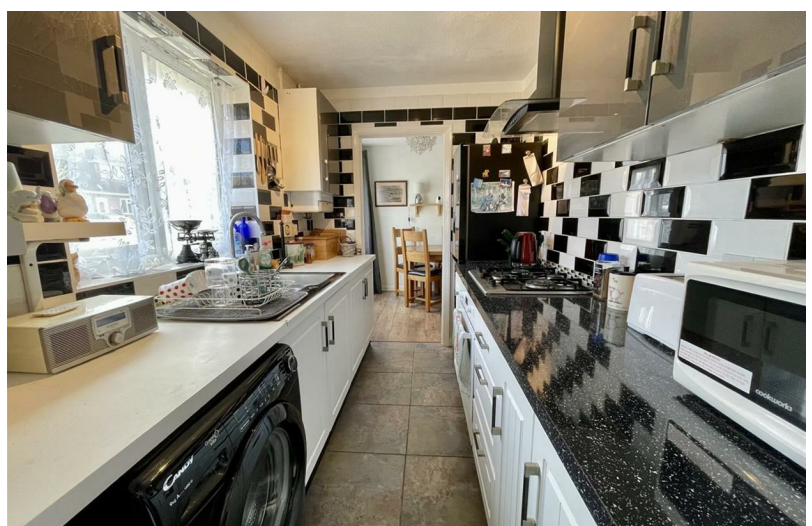


2  
BED

# Two Bedroom Bungalow - No Ongoing Chain

15, Willow Walk, Newhaven, BN9 9SS



Price £310,000  
Freehold

**phillipmann**  
we do more

[www.phillipmann.com](http://www.phillipmann.com)





## inbrief...

Phillip Mann estate agents are delighted to offer for sale this two bedroom bungalow located in Willow Walk. The property is situated on a level plot and is being sold with NO ONGOING CHAIN.

A glazed door gives access to the entrance hall which has several storage cupboards, loft access and doors which lead to the accommodation. The lounge/diner is a lovely size room which has laminate flooring, feature open fireplace, ample space for dining table and patio doors which overlook the rear garden.

The kitchen has been refitted with a range of wall and base units which includes a selection of cupboards and drawers. There is a built in sink unit along with a built in oven and hob. There are appliance spaces, wall mounted boiler and a window overlooks the front.

Bedroom one is a good size double with space for a large wardrobe and overlooks the rear garden. Bedroom two again is a good size double overlooks the rear. Completing the inside is a wet room which has a shower area, WC and wash hand basin.

Outside there is a good size level rear garden with a patio area and a large area of lawn. There is flower borders and a gate which leads to the Valley ponds.

The front is arranged as low maintenance with some flower beds and a single garage with up and over door.



Energy Rating D

Council Tax C

moreinfo...



Phillip Mann Newhaven Office  
16 Bridge Street, Newhaven, BN9 9PJ  
01273 517517

To see more details on this & all our homes go to  
[www.phillipmann.com](http://www.phillipmann.com)