

1
BED

Garden Flat with No Ongoing Chain

19a, Elphick Road, Newhaven, BN9 9SZ

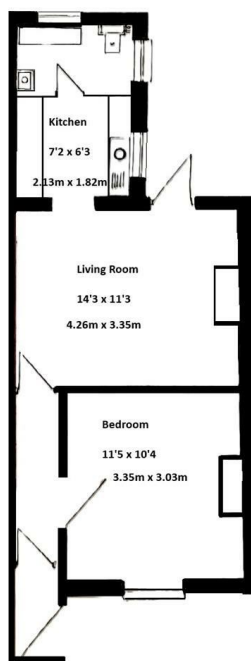


Price £164,950

Leasehold - Share of Freehold

phillipmann
we do more

www.phillipmann.com



inbrief...

Phillip Mann Estate Agents are delighted to offer for sale this well presented one bedroom garden flat. The flat is being sold with share of freehold and NO ONGOING CHAIN.

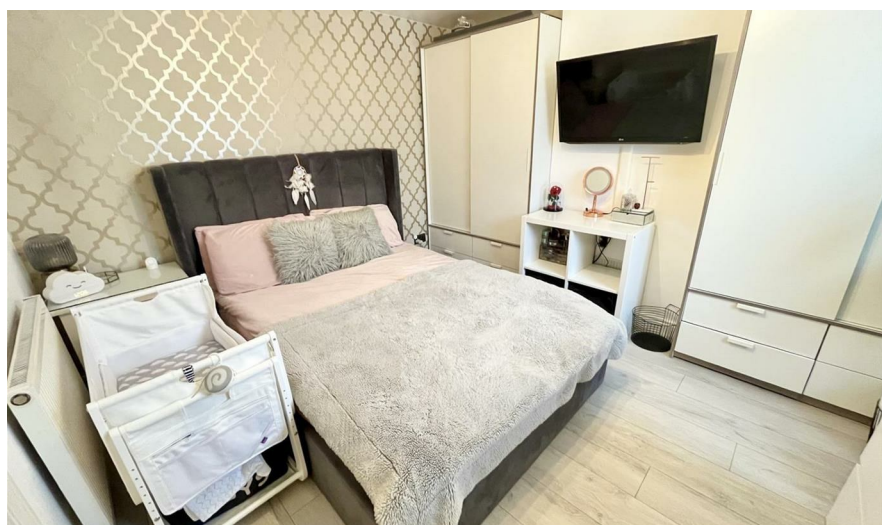
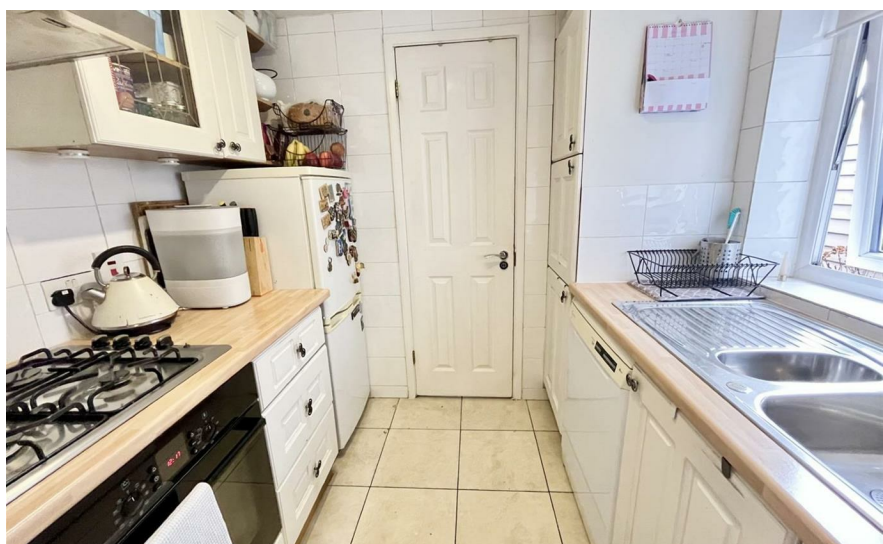
The property is accessed via part glazed entrance door leading into entrance porch. From here a door leads to the hallway.

The spacious main bedroom is situated at the front of the property and benefits from laminate flooring and plenty of space for bedroom furniture.

Moving through, the living room is a generous size and has been decorated in a modern way with two double built in storage cupboards one of which has plumbing and space for a washing machine, laminate flooring and a door overlooking and affording access to the rear garden. From here, the kitchen is fitted with a range of wood fronted wall and base units, there is a built in electric oven and gas hob and space for a fridge/freezer and dishwasher. A window overlooks the side and the floor is tiled.

The bathroom is situated at the rear of the property and is fitted with a panelled bath with mixer tap and shower over, low flush WC and wash hand basin. This room is complete with tiled walls and floor, heated towel rail and two frosted windows to the side and rear.

Outside, the delightful rear garden is a particular feature for this property, there is an area of decking and artificial grass with flower and shrub borders. There is a timber summerhouse which has space for a tumble dryer, power and light and a rear access door.



Energy Rating C

Council Tax Band A

moreinfo...



Phillip Mann Newhaven Office
16 Bridge Street, Newhaven, BN9 9PJ
01273 517517

To see more details on this & all our homes go to
www.phillipmann.com