

1
BED

One Bedroom First Floor Flat With Parking

12 Martello Court , St. Martins Crescent, Newhaven, BN9 0PH

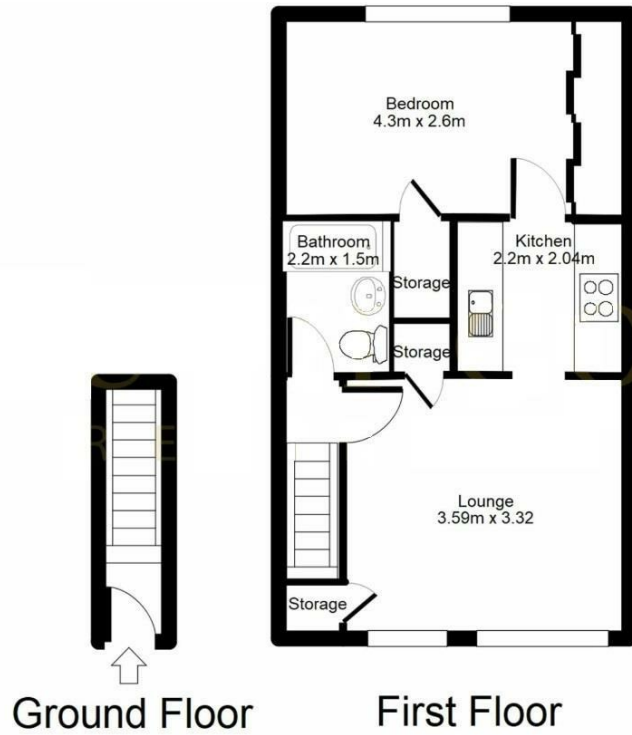


Price £139,950

Leasehold

phillipmann
we do more

www.phillipmann.com



inbrief...

Phillip Mann Estate Agents are delighted to offer for sale this one bedroom first floor flat situated in a popular location in South Heighton. The property is accessed via its own private front door, the entrance hallway has stairs leading to the accommodation.

The lounge/diner is a good size room with space for living room furniture and a dining table. There are two cupboards which can be used for storage. There are two double glazed windows allowing light in to the room, which have views to Downland and the front of the property.

Moving through, the kitchen is fitted with a range of light fronted wall and base units. The kitchen is part tiled and has wood effect flooring. There is a built in electric cooker with gas hob and an extractor fan. There are spaces for washing machine and under counter fridge. The good size double bedroom is located at the rear of the property. There is a wall length built in wardrobe and a large airing cupboard for storage. There is a large double glazed window overlooking the rear of the property.

The bathroom is accessed at the top of the stairs from the entrance hallway. The floor is fully tiled and the walls are part tiled. There is a white suite to include a bath with shower attached to taps, wall mounted hand wash basin and low flush WC. There is a loft hatch providing access to the loft space.

Added benefits to this property are; the property is in a quiet location with amenities close by, there are direct routes on to the A27, local transport links are within walking distance and there is an allocated parking space to the rear of the property.

This would be an ideal opportunity for a first time buyer or an investor, viewings are highly recommended.



Council Tax A

EPC Rating C

moreinfo...



Phillip Mann Newhaven Office
16 Bridge Street, Newhaven, BN9 9PJ
01273 517517

To see more details on this & all our homes go to www.phillipmann.com