

1
BED

Ground Floor Flat in Town Centre

54, High Street, Newhaven, BN9 9PA



Price £165,000

Leasehold

phillipmann
we do more

www.phillipmann.com



inbrief...

Phillip Mann estate agents are delighted to bring to the market, this brand new ground floor apartment situated within the heart of Newhaven Town Centre.

The property is accessed via composite front door leading into the accommodation.

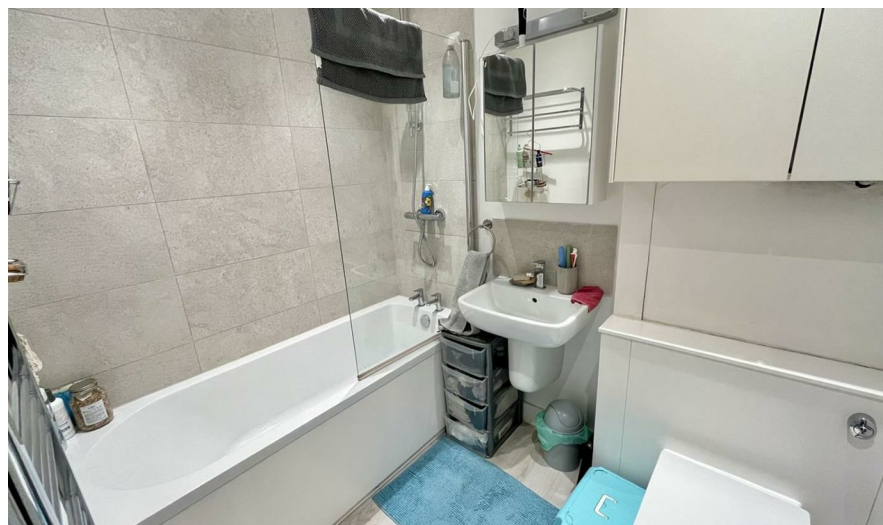
The spacious living area 25' x 12'1 has an open plan lounge/kitchen which is fitted with a range of modern wall and base units and includes integrated fridge freezer, electric oven and hob with extractor above. A sink unit is set into modern worksurface. There is plenty of space for a dining set.

The master bedroom 12'2 x 9'5 is a generous size has a double glazed window to the rear and door giving access to the rear patio which also has gated rear access.

The modern bathroom is fitted with a white suite which comprises of a paneled bath with shower attachment, low level WC and wash hand basin.

This exciting property is located in a superb position within just a stones throw of mainline bus routes to Brighton and Eastbourne and well as train links to Lewes, Brighton and London Victoria. There is also a good selection of local schools, doctors and shops all within just a few minutes walk.

Kitchen/Lounge 25'5 x 11'8
Bedroom One 12'4 x 9'5



Energy Rating B

Council Tax Band B

moreinfo...

Phillip Mann Newhaven Office
16 Bridge Street, Newhaven, BN9 9PJ
01273 517517



To see more details on this & all our homes go to
www.phillipmann.com