

2
BED

Two Bedroom Park Home With Parking & Garage

124, Newhaven Heights, Newhaven, BN9 9HF



Price £189,950

Freehold

phillipmann
we do more

www.phillipmann.com



inbrief...

Phillip Mann estate agents are pleased to offer for sale this extremely well presented two bedroom park home located on Newhaven Heights. The property has been well maintained by the current owner and offers good size accommodation throughout.

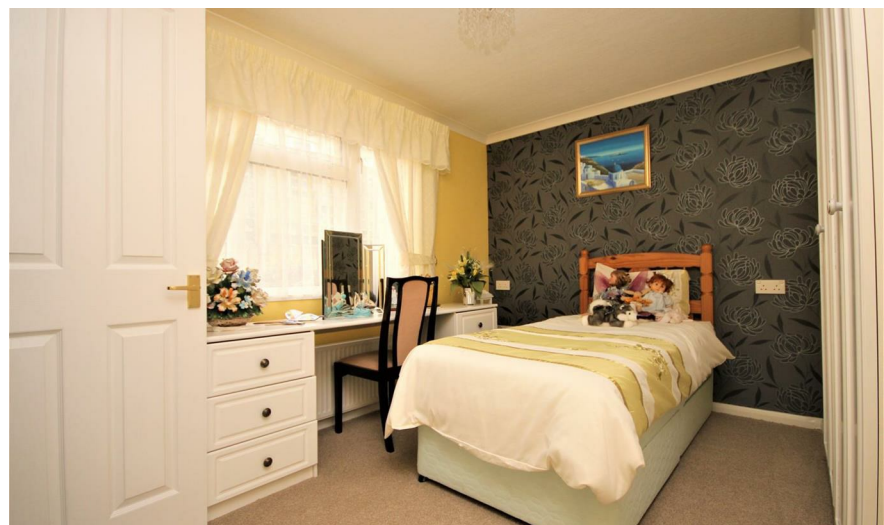
The entrance hall has three large built in storage cupboards, access to the loft space and doors which lead to the accommodation. The lounge/diner is a lovely bright triple aspect room with a feature electric fire with wood surround and marble effect inset. There is ample of space for a dining room table and windows overlooking the front, side and rear.

The kitchen has been refitted to a high standard which include a good selection of white fronted cupboards and drawers. There is a built in sink unit which is set into marble effect worktops and built in electric oven and four ring gas hob. There is space for a washing machine and fridge/freezer. There is two large larder cupboards, one housing the combination boiler (fitted 2017). The room is finished off with coloured splash-backs, under counter lighting and a window overlooking the rear garden.

The master bedroom has built in wardrobes and overlooks the rear. A door leads to the en-suite shower room. This is fitted with a large walk in shower, low level WC and wash hand basin. The second bedroom is a further double with built in wardrobes and overlooks the front. Completing the property is a refitted bathroom with a panelled bath, low level WC and wash hand basin.

Outside there is a low maintenance rear garden, mainly laid to patio with side access. The front has been landscaped with steps leading to the front door. There is off road parking and access to the garage which has power and an electric up and over door.

The property is being sold with NO ONGOING CHAIN.



Council Tax B

moreinfo...

Phillip Mann Newhaven Office
16 Bridge Street, Newhaven, BN9 9PJ
01273 517517

To see more details on this & all our homes go to
www.phillipmann.com