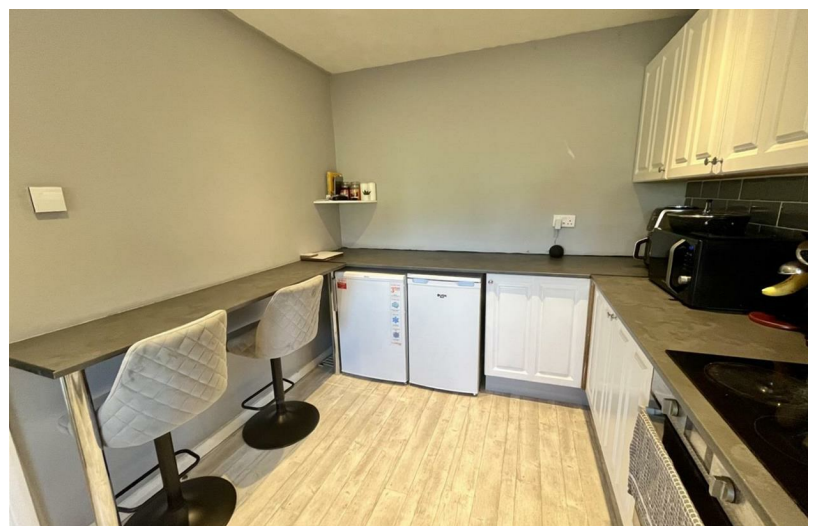


3  
BED

# Terraced House with Garage and No Chain

2, Iford Close, Newhaven, BN9 0PG



Offers Over £260,000

Freehold

**phillipmann**  
we do more

[www.phillipmann.com](http://www.phillipmann.com)



## inbrief...

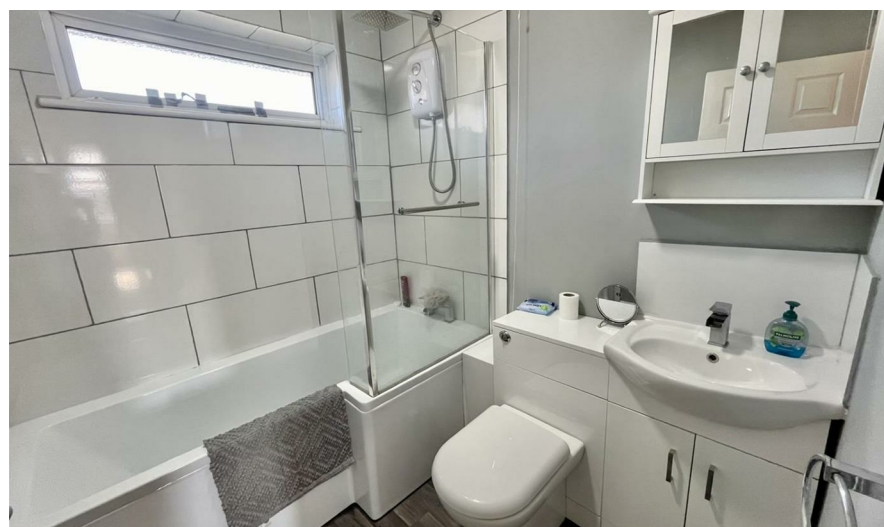
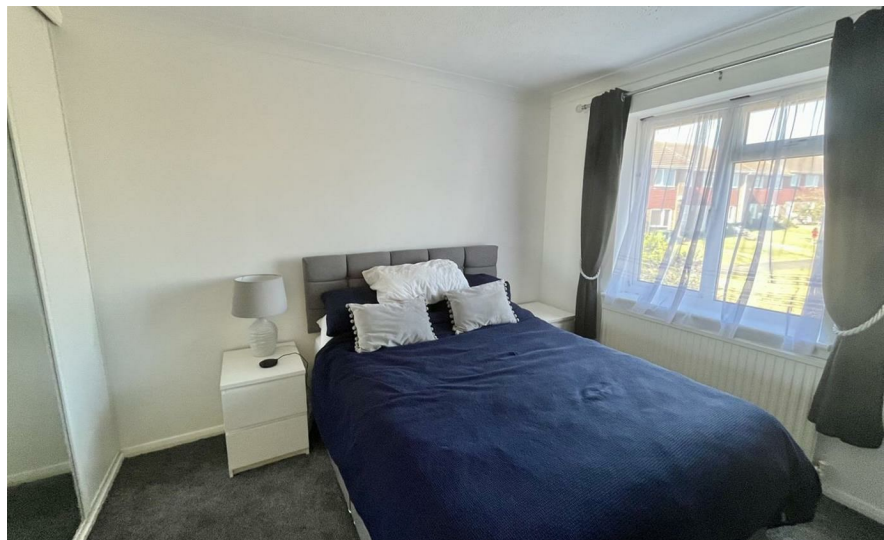
Phillip Mann estate agents are pleased to offer for sale this terraced family home situated in a popular residential area in South Heighton. The property is being sold with NO ONGOING CHAIN and viewing comes highly recommended.

The entrance hall gives access to all the ground floor accommodation and the first room on your right is the kitchen/breakfast room. Fitted with a range of wooden fronted wall and base units, there is an integrated electric oven, electric hob as well as spaces for washing machine, fridge, freezer and dishwasher. A double glazed window overlooks the front of the property and the room is part tiled. Moving through, the lounge is at the rear and has ample room for a dining table, a double glazed window and door overlooks and affords access to the rear of the property. A cloakroom completes the downstairs and is fitted with a low flush toilet and wash hand basin.

Moving upstairs the landing has an airing cupboard and loft access. The main bedroom is located at the rear, is carpeted and has range of fitted cupboards. A double glazed window has views towards Newhaven. Bedroom two is another carpeted double room with a double glazed window that looks over the front and bedroom three, this time a single room, again looks over the rear. The family bathroom completes the accommodation and is fitted with a white suite to comprise a bath with shower unit over, low flush toilet and wash hand basin.

Outside the rear garden has a small patio and steps leading down to the garage which has an up and over door and power and light points.

Lounge 15'1 x 11'10  
 Kitchen 15' x 8'5  
 Bedroom One 13'8 x 8'7  
 Bedroom Two 13'1 x 8'6  
 Bedroom Three 8'1 x 6'1



Energy Rating C

Council Tax Band C

moreinfo...

Phillip Mann Newhaven Office  
 16 Bridge Street, Newhaven, BN9 9PJ  
 01273 517517



To see more details on this & all our homes go to  
[www.phillipmann.com](http://www.phillipmann.com)