

3
BED

A Large Three Bedroom Flat With Private Garden

4, Southdown Court, Newhaven, BN9 9JT



Offers Over £179,950

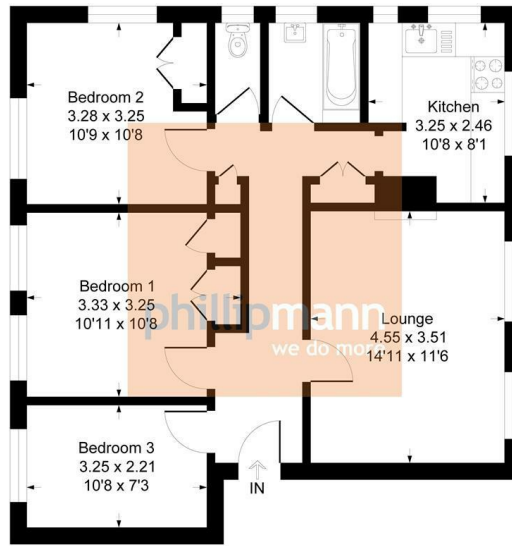
Leasehold

phillipmann
we do more

www.phillipmann.com

4 Southdown Ct, BN9 9JT

Approximate Gross Internal Floor Area = 72.45 sq m / 780 sq ft



First Floor

Illustration for identification purposes only, measurements are approximate, not to scale

inbrief...

Phillip Mann estate agents are delighted to offer for sale this three bedroom first floor flat located in Southdown Court. The property is being sold with no ongoing chain and benefits from a good size private garden.

A communal entrance door gives access to the communal hallway which has a staircase leading to the first floor landing, from here there is a private door leading to flat 4.

The entrance hall has several storage cupboards and doors which lead onto the accommodation. The lounge is a generous size room with a feature cast iron fireplace and two windows overlooks the front with lovely views towards Seaford Bay. The kitchen is fitted with a range of wall and base units which incorporates a selection of cupboards and drawers. There is a built in sink unit which is set into work surface and there is a built in oven and hob. There are spaces for washing machine and fridge/freezer. The room is complete with a wall mounted Worcester boiler (less than 3 years old), part tiled walls and a window overlooking the front enjoying open views. The master bedroom is a generous size with built in wardrobes and a window overlooks the rear. Bedroom two and three and both further doubles and again, overlooks the rear. A family bathroom has a paneled bath with shower over and wash hand basin. Completing the inside is a separate WC.

Outside there is a private good size garden which is mainly laid to lawn. There is also the benefit of two brick built storage cupboards.



Energy Rating C

Council Tax Band B

moreinfo...



Phillip Mann Newhaven Office
16 Bridge Street, Newhaven, BN9 9PJ
01273 517517

To see more details on this & all our homes go to www.phillipmann.com