

2
BED

Two Bedroom Ground Floor Flat With Parking

16 Bridge Court, Bridge Street, Newhaven, BN9 9PJ

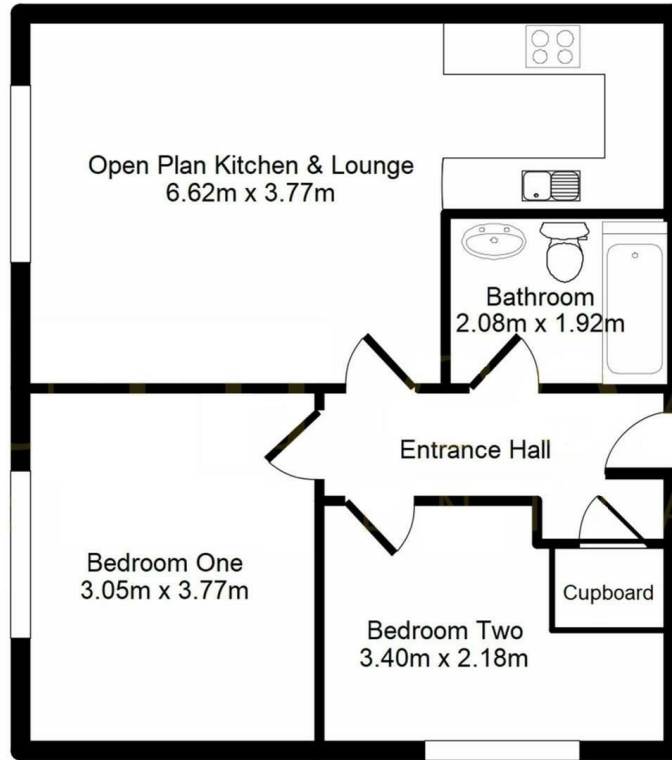


Offers Over £160,000

Leasehold

phillipmann
we do more

www.phillipmann.com



inbrief...

Phillip Mann estate agents are pleased to offer for sale this two bedroom ground floor flat located in Bridge Street. The property is ideally located in the town centre and has its own allocated parking space.

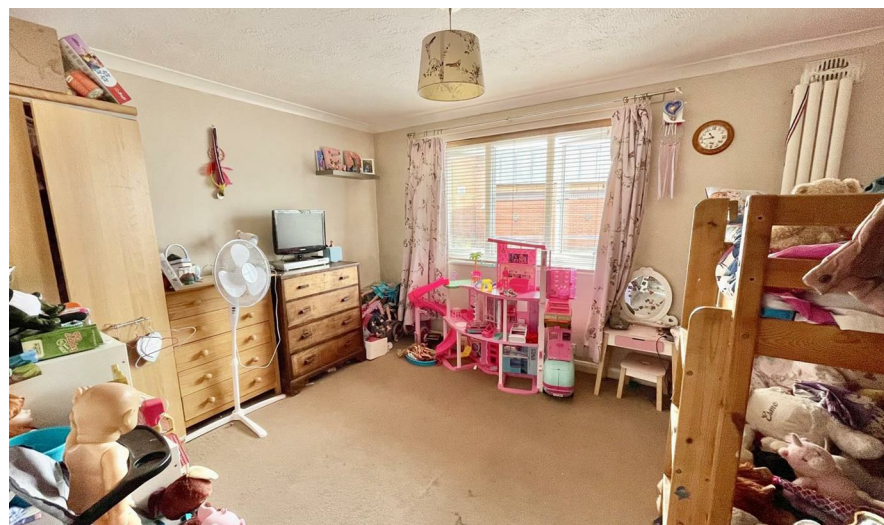
There is a communal entrance door which gives access to a communal entrance hall. Here there is access to flat 16.

The entrance hall has a large storage cupboard, laminate flooring and doors which lead to the accommodation.

The lounge is a lovely bright room again, with laminate flooring, ample space for a table and a window overlooks the front. Open plan kitchen area has a range of wall and base units which incorporates a selection of cupboards and drawers. There is a built in sink unit and spaces for washing machine, fridge/freezer and tumble drier. The room is finished off with part tiled walls.

Bedroom one is a good size double which overlooks the front. Bedroom two is a further double and overlooks the side. Completing the inside is a bathroom with a paneled bath with shower over, low level WC and wash hand basin.

Outside there is an allocated parking space.



Council Tax Band B

Energy Rating D

moreinfo...



Phillip Mann Newhaven Office
16 Bridge Street, Newhaven, BN9 9PJ
01273 517517

To see more details on this & all our homes go to
www.phillipmann.com