

2
BED

A Stunning Ground Floor Flat With Private Garden

3 St Lukes Court, Church Hill, Newhaven, BN9 9HZ



Price £249,950

Leasehold

phillipmann
we do more

www.phillipmann.com

3 St Lukes Ct, BN9 9HZ

Approximate Gross Internal Floor Area = 62.3 sq m / 671 sq ft

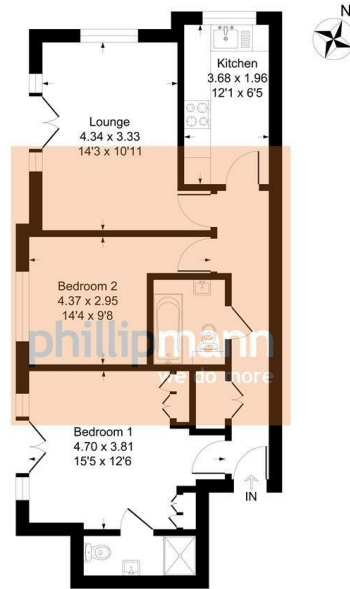


Illustration for identification purposes only, measurements are approximate, not to scale

inbrief...

Phillip Mann estate agents are delighted to offer for sale this two bedroom ground floor flat with it's own private garden. The property is considered to be in excellent condition and is being sold with NO ONGOING CHAIN.

The property is access via a communal entrance door which has a private entrance door leading to the flat.

The entrance hall has a built in storage cupboard, down-lights and doors which lead to the accommodation.

The lounge is a lovely bright double aspect room which has ample space for a dining table and patio doors overlook and gives access onto a private garden.

The kitchen has a good range of white fronted wall and base units which incorporates a selection of cupboards and drawers. There is a built in sink unit which is set into work surface. There is a built in oven, gas hob and fridge/freezer. The room is complete with space for a washing machine, part tiled wall, cupboard housing a wall mounted boiler and a window overlooks the rear.

The master bedroom has a range of wardrobes, ample space for a double bed and patio doors gives access onto the rear garden. There is access to an en-suite which has a shower cubicle, WC and wash hand basin. Bedroom two is a further double and overlooks the rear. Completing the inside is a bathroom with a paneled bath, wash hand basin and low level WC.

Outside there is a delightful private patio with side access.



Energy Rating C

Council Tax Band B

moreinfo...



Phillip Mann Newhaven Office
16 Bridge Street, Newhaven, BN9 9PJ
01273 517517

To see more details on this & all our homes go to www.phillipmann.com