

3  
BED

# Spacious Three Bedroom House With Parking

173, Gibbon Road, Newhaven, BN9 9ET

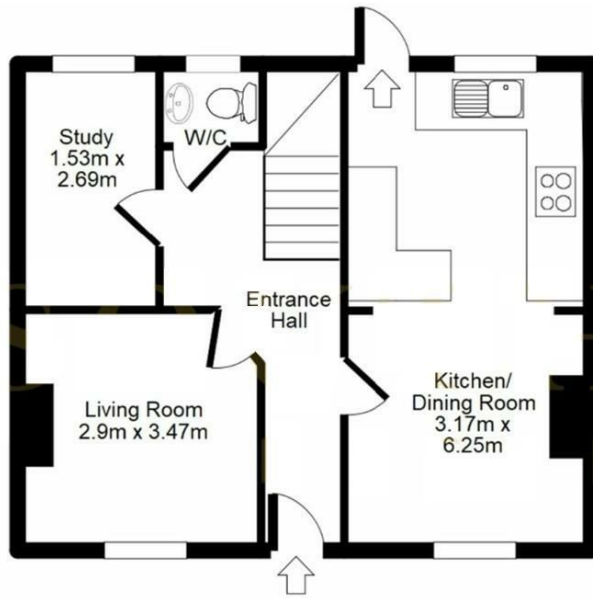


Offers Over £275,000

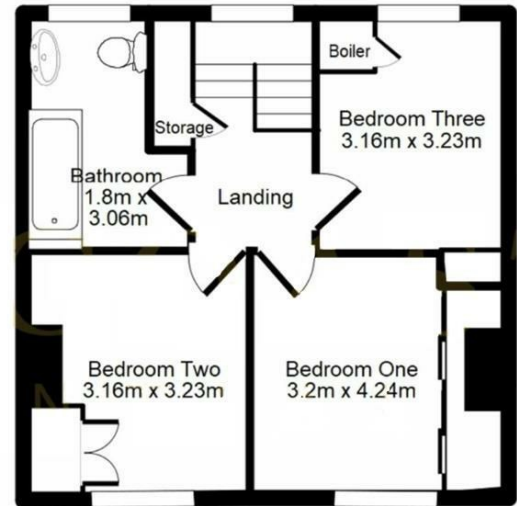
Freehold

**phillipmann**  
we do more

[www.phillipmann.com](http://www.phillipmann.com)



Ground Floor



First Floor

inbrief...

Phillip Mann estate agents are delighted to offer for sale this spacious three bedroom terrace house located in a popular residential area. The property is located close to local schools and is being sold with NO ONGOING CHAIN.

A part glazed entrance door gives access to the entrance hall which has laminate flooring and doors which lead to the downstairs accommodation. The lounge is a generous size room which has a feature open fireplace and a window overlooking the front. The kitchen/breakfast is a lovely double aspect room which is fitted with a range of wall and base units. A sink unit is set into work surface and there is appliance space for the modern day appliances. There is ample space for breakfast table and the room is complete with laminate flooring. There is also the benefit of a study which has a window overlooking the rear. Completing the downstairs is a cloakroom.

The first floor landing has loft access, a large storage cupboard and a doors which lead to the remainder of the accommodation. Bedroom one is a generous size room with a range of built in wardrobes and a window overlooking the rear. Bedroom two is a further double which also overlooks the front. Bedroom three is a further double and overlooks the rear. Completing the inside is a family bathroom which has a paneled bath, low level WC and wash hand basin.

Outside there is a good size rear garden which is mainly laid to lawn. There is a top patio area with a built in seating.

The front has off road parking along with an area of lawn with flower boarded.



Energy Rating C

Council Tax Band C

moreinfo...



Phillip Mann Newhaven Office  
16 Bridge Street, Newhaven, BN9 9PJ  
01273 517517

To see more details on this & all our homes go to [www.phillipmann.com](http://www.phillipmann.com)