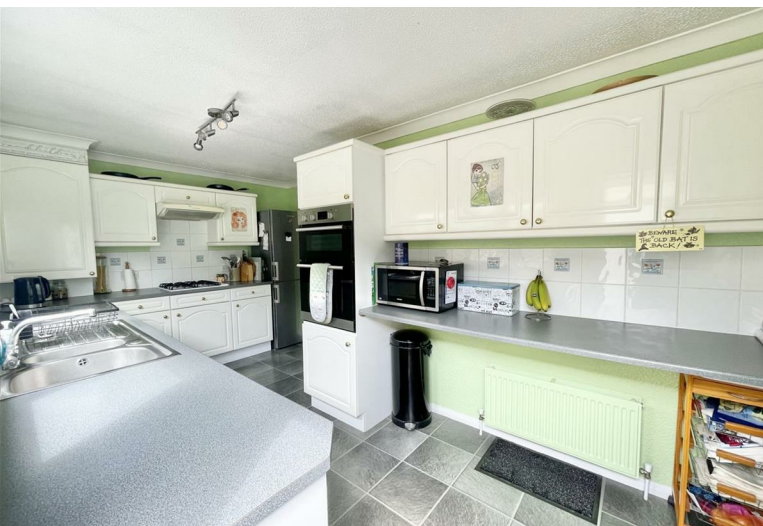


2  
BED

# A Stunning 40 x 20 Park Home - No Chain

109, Newhaven Heights, Newhaven, BN9 9HF



Price £199,950

Freehold

**phillipmann**  
we do more

[www.phillipmann.com](http://www.phillipmann.com)



## inbrief...

This superbly presented 40 x 20 park home situated on the sought after Newhaven Heights development.

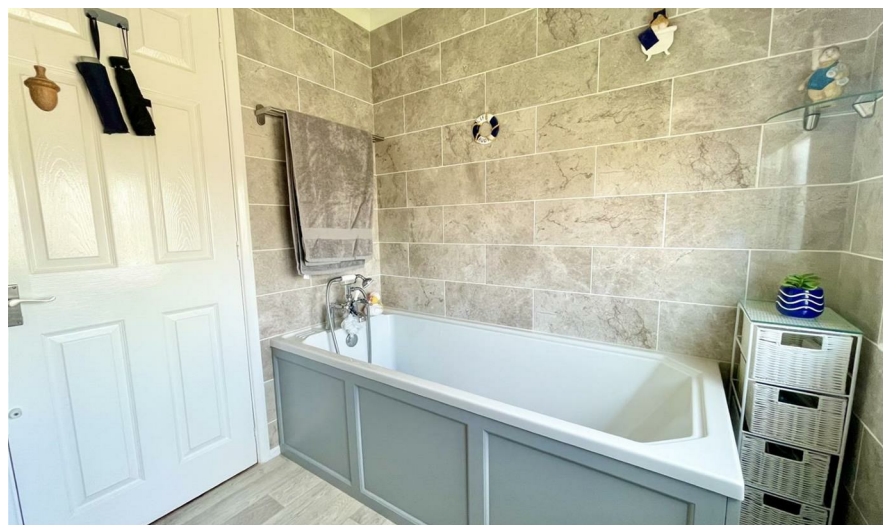
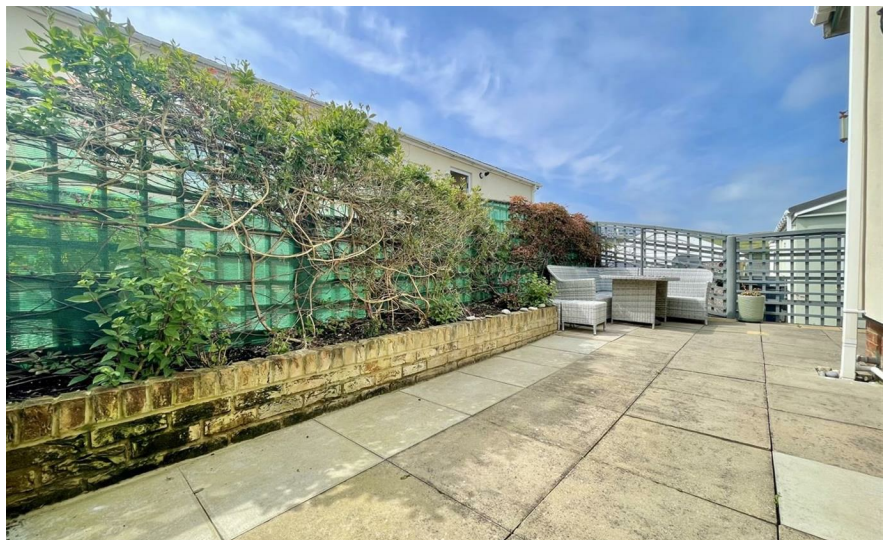
The entrance hall is neutrally decorated and has wood flooring and this theme continues throughout the property. The L shaped lounge/dining room is a good sized space and has an electric flame effect fireplace which is a feature of the room. The numerous double glazed bow windows allow plenty of light in and have superb views towards Newhaven harbour and Downland. Leading from the dining room is the kitchen which can also be accessed from the hallway. The white fronted units are plentiful and there is also a built in cooker and hob, as well as a fridge freezer. The room is complete with part tiled walls, a window overlooking the garden and a door leading to the rear.

Bedroom one is a good sized double room which has the benefit of a walk in wardrobe and there is also the added bonus of an en-suite shower room. Bedroom two is also a good sized double room with full width fitted wardrobes. The main bathroom has been refitted to include a white suite to with a bath, wash hand basin and toilet. The room is complete with fully tiled walls and a window to the side.

Outside, the park home sits on a decent size plot which offers lawn to the front and a low maintenance rear garden.

The garage measures 21 feet in length and has more than enough room to put the car away as well as room for a workshop area to the rear. The driveway also offers parking for several vehicles.

Lounge/Dining Room 19'6 max x 15'11 max  
 Kitchen 15'4 x 9'6  
 Bedroom One 10'1 x 9'8  
 Bedroom Two 10'5 x 9'6  
 Garage 21' x 9'10



Council Tax Band B

moreinfo...

Phillip Mann Newhaven Office  
 16 Bridge Street, Newhaven, BN9 9PJ  
 01273 517517

To see more details on this & all our homes go to  
[www.phillipmann.com](http://www.phillipmann.com)

