

3
BED

Stunning Individual Detached Bungalow

32, Beresford Road, Newhaven, BN90LY



Offers Over £369,950

Freehold

phillipmann
we do more

www.phillipmann.com



inbrief...

Phillip Mann estate agents are delighted to offer for sale this stunning three bedroom detached bungalow located on Mount Pleasant. The property is in excellent condition and is being sold with no ongoing chain.

A part glazed entrance door leads directly onto the lounge/diner, this is a delightful South facing room with wood flooring, a feature case iron wood burner with exposed brick chimney. Patio doors overlooks and affords access to the front.

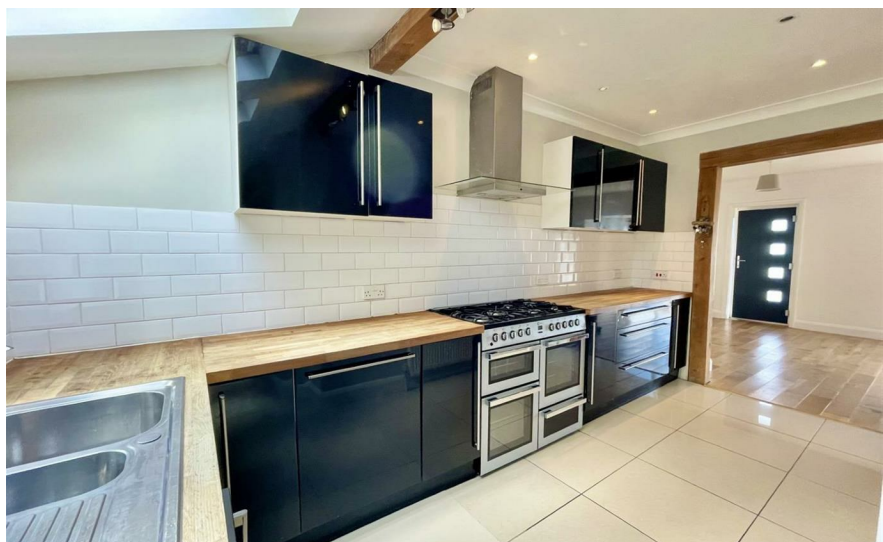
The kitchen/breakfast room has been tastefully refitted to include a range of high gloss black fronted wall and base units which incorporates a selection of cupboards and drawers. There is a built in sink unit which is set into solid wood work surface. There is a built in dishwasher, washing machine and space for fridge/freezer and range style cooker. The room is complete with tiled flooring, part tiled walls, space for breakfast table and a door leading to the rear.

From the lounge, an inner hallway has loft access and doors which lead to the remainder of the accommodation. Bedroom one is a good size room with ample space for wardrobes and patio doors overlook the front. Bedroom two & three both overlook the side and are both doubles. Completing the inside is a eye-catching bathroom with have a fitted bath, large shower cubicle, wash hand basin and low level WC.

Outside there is a good size rear garden which is mainly laid to lawn along with a brick shed and side access.

The front garden is mainly laid to lawn with steps leading to the front door. There is also off road parking and a single garage.

Lounge 18'8 x 15'2
 Kitchen 15'9 x 15'6
 Bedroom One 15'2 x 12'
 Bedroom Two 11'8 x 9'2
 Bedroom Three 10'5 x 8'7



Energy Rating E

Council Tax C

moreinfo...

Phillip Mann Newhaven Office
 16 Bridge Street, Newhaven, BN9 9PJ
 01273 517517



To see more details on this & all our homes go to
www.phillipmann.com