

3
BED

Well Presented End Terrace Family House

17, Ash Walk, Newhaven, BN9 9XH

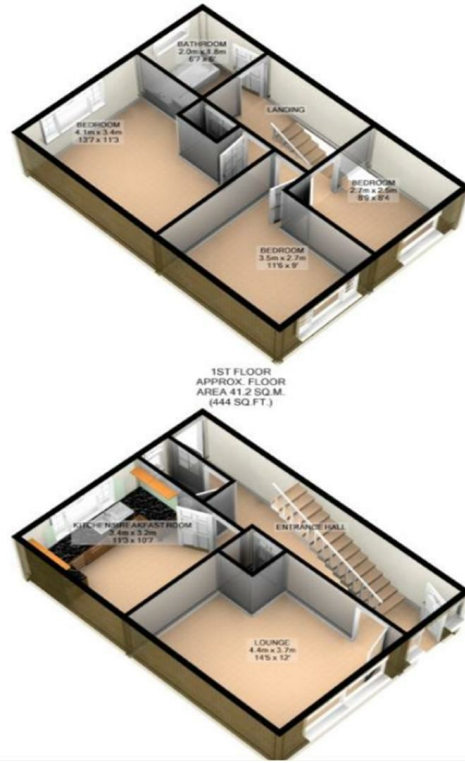


Price £285,000

Freehold

phillipmann
we do more

www.phillipmann.com



inbrief...

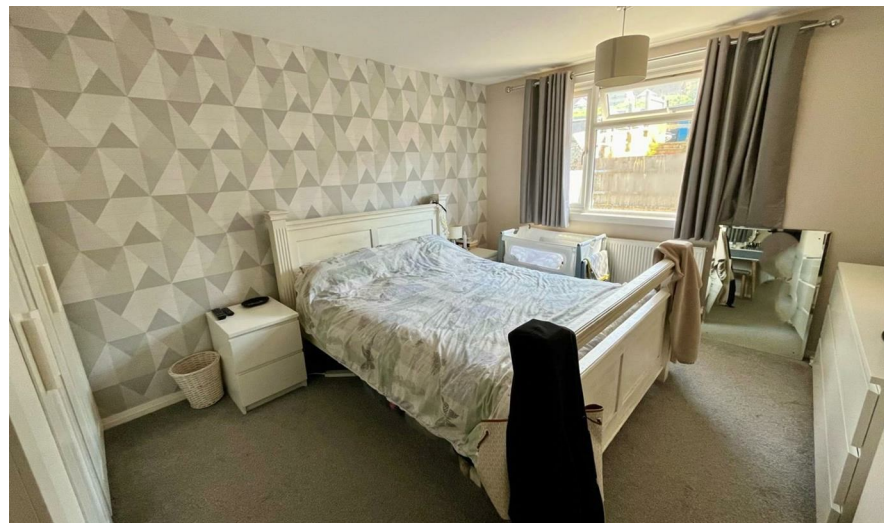
Phillip Mann Estate Agents are delighted to offer for sale this well presented three bedroom end terrace house situated in a quiet residential area. The property benefits from gas central heating, double glazing and viewings come highly recommended.

The property is accessed via part glazed entrance door leading into entrance hall, here there is plenty of storage and access to the ground floor accommodation. The lounge is a generous size which is carpeted and has a window overlooking the front. The kitchen/breakfast room is a good size and has been refitted with a range of modern gloss fronted wall and base units incorporating a selection of cupboards and drawers. There is space for all modern day appliances to include cooker, fridge/freezer and washing machine. A window overlooks the rear and there is space for a table and chairs. Completing the ground floor is a separate cloakroom fitted with low flush WC and wash hand basin, There is a door leading to the rear garden.

Stairs rise to the first floor landing which has an airing cupboard and access to the loft. The main bedroom is a generous double which is carpeted and has a window overlooking the rear. Bedroom two, again, a double is carpeted and has window to the front. Bedroom three, a good size single is carpeted and overlooks the front. The family bathroom is fitted with a panelled bath with mixer tap and shower over, low flush WC and vanity style wash basin. The walls are fully tiled and there is a frosted window.

Outside, the rear garden is tiered and mainly laid to decking. There is a brick built storage shed and rear access.

Located in Newhaven, this property benefits from a peaceful neighbourhood while still being within easy reach of local amenities, schools, and transport links.



Energy Rating C

Council Tax Band B

moreinfo...



Phillip Mann Newhaven Office
16 Bridge Street, Newhaven, BN9 9PJ
01273 517517

To see more details on this & all our homes go to
www.phillipmann.com