

3
BED

Three Bedroom Victorian House - No Chain

5, Lawes Avenue, Newhaven, BN9 9SA



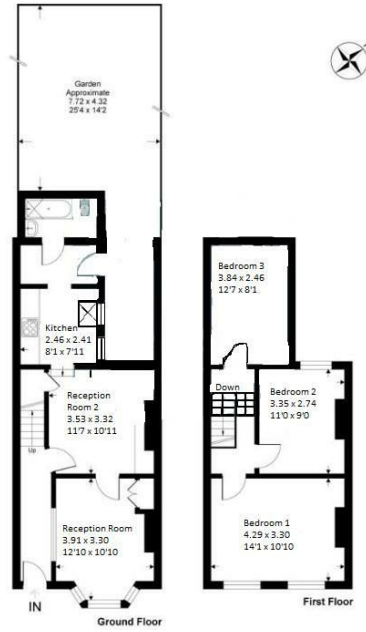
Price £259,950

Freehold

phillipmann
we do more

www.phillipmann.com

Lawes Avenue, BN9
Approximate Gross Internal Area = 90 sq m / 967 sq ft



This floor plan is for representation purposes only as defined by the RICS code of Measuring Practice (CIPM), where requested and should be used as such by any prospective purchaser. Whilst every effort has been made to ensure the accuracy contained here, the measurements of areas, volumes and heights is approximate and its responsibility is taken by any user, omission or misstatement. Specifically no guarantee is given on the floor plan or the accuracy of details on the plan. Any figure provided is for guidance only and should not be used for valuation purposes.
Copyright Goodfellow Ltd. 2022 - Provided for Phillip Mann

inbrief...

Phillip Mann estate agents are delighted to offer this Victorian three bedroom house located in a popular location close to town. The property could benefit from some updating and is being sold with no ongoing chain.

A part glazed door gives access to the entrance hall where there is access to the downstairs accommodation.

The lounge is a generous size with a bay window overlooking the front of the property. An opening gives access to a good size dining room which overlooks the rear. From here, there is access to a kitchen which is fitted with a good range of wall and base units. There is a built in sink unit and space for the modern day appliances. The room is part tiled and a window overlooks the rear garden. Completing the downstairs is a family bathroom which is fitted with a paneled bath, low level WC and wash hand basin.

The first floor landing has loft access and doors which lead to the remainder of the accommodation. Bedroom one is a generous double which overlooks the front of the property. Bedroom two and three both overlook the rear and are further doubles.

Outside there is a low maintenance rear garden with a gate leading to a rear pathway.



Energy Rating D

Council Tax B

moreinfo...



Phillip Mann Newhaven Office
16 Bridge Street, Newhaven, BN9 9PJ
01273 517517

To see more details on this & all our homes go to
www.phillipmann.com