

3  
BED

# Three Bedroom Family House - NO CHAIN

26, Chestnut Way, Newhaven, BN9 9XG

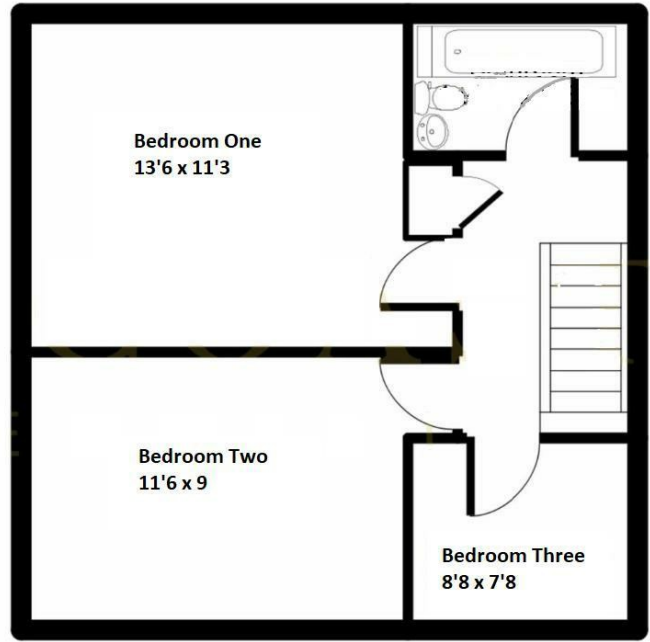
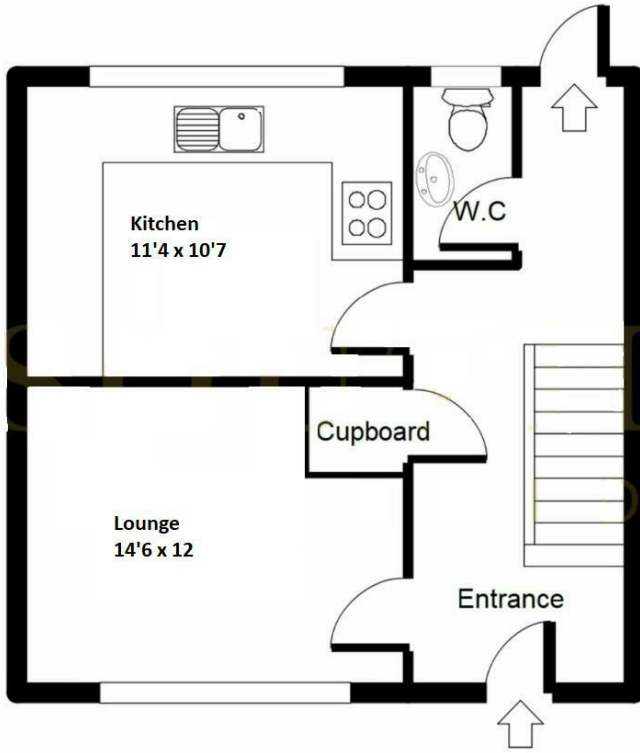


Offers Over £245,000

Freehold

**phillipmann**  
we do more

[www.phillipmann.com](http://www.phillipmann.com)



## inbrief...

Phillip Mann Estate Agents are delighted to offer for sale this well presented family house situated in a quiet location in Newhaven Valley close to local schools. The property benefits from warm air central heating, double glazing and is being sold with NO ONGOING CHAIN.

The property is accessed via part glazed entrance door leading into the entrance hall, from here, you have access to the downstairs accommodation. The spacious lounge is an excellent size and a window overlooks the front of the property. The kitchen is a great size which is fitted with a range of modern wall and base units incorporating a selection of cupboards and drawers. There is a built in electric oven and hob with extractor above and there is space for all modern day appliances to include fridge, freezer, washing machine and dishwasher. This room is complete with part tiled walls and floor and a window overlooking the rear. Completing the downstairs is a cloakroom fitted with low flush WC and hand basin.

Stairs rise to the first floor landing with a built in airing cupboard and loft access. Bedroom one is a generous size double which is carpeted and has a window which has views of the downs. Bedroom two, again a good size double is carpeted and overlooks the front. Bedroom three is a single and overlooks the front.. The family bathroom completes the property fitted with a paneled bath with mixer tap and shower above, wash hand basin and low flush WC.

Outside the rear garden is mainly laid to patio with a rear access. There is the added bonus of a brick built shed.



Council Tax Band C

Energy Rating C

moreinfo...



Phillip Mann Newhaven Office  
16 Bridge Street, Newhaven, BN9 9PJ  
01273 517517

To see more details on this & all our homes go to  
[www.phillipmann.com](http://www.phillipmann.com)