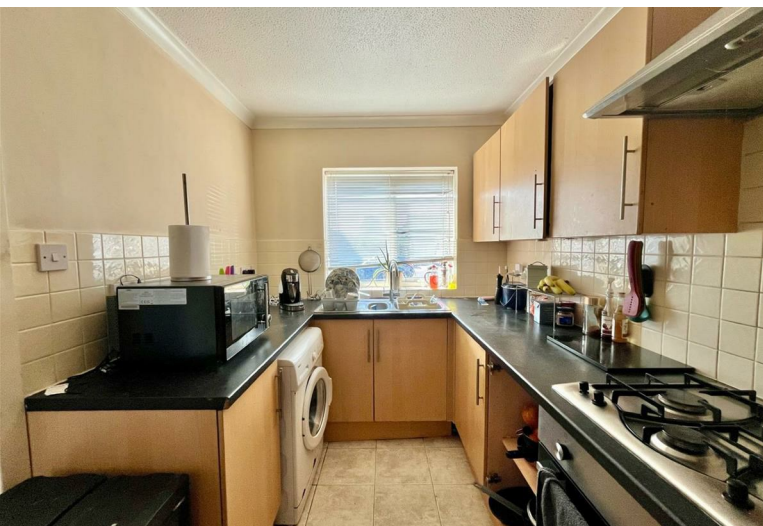


2  
BED

# Two Bedroom House with No Chain

21, Powell Gardens, Newhaven, BN9 0PS



Offers Over £260,000

Freehold

**phillipmann**  
we do more

[www.phillipmann.com](http://www.phillipmann.com)



## inbrief...

Phillip Mann Estate Agents are delighted to offer for sale this two bedroom semi detached property situated in a popular residential location in Powell Gardens. The property benefits from double glazing, gas central heating and is being offered with NO ONGOING CHAIN.

The property is accessed via part glazed entrance door leading into entrance hall. Here there is a downstairs cloakroom fitted with low flush WC and wash hand basin. The kitchen is situated at the front of the property and is fitted with a range of wood fronted wall and base units incorporating a selection of cupboards and drawers. There is a built in electric oven and gas hob with extractor above and space for a fridge/freezer and washing machine.

The spacious lounge/diner is a generous size room, carpeted, has a built in understairs storage cupboard and plenty of space for a dining set. Sliding patio doors overlook and afford access to the rear garden.

Stairs rise to the first floor landing providing access to the loft and the remainder of the accommodation. Bedroom one is a good size double, has a built in storage cupboard and overlooks the front. Bedroom two, again, a generous double is carpeted, has built in storage and overlooks the rear. Completing the accommodation is the bathroom fitted with a panelled bath with mixer tap and shower over, low flush WC and wash hand basin. This room is complete with fully tiled walls and a frosted window to the side.

Outside, the rear garden has a lower patio area with steps leading up to an upper decked area. The front is arranged as off road parking for several vehicles and the property does benefit from a garage in a block.

Powell Gardens is located in a popular residential area and is located close to Denton primary school, bus routes and a short walk to Newhaven Train Station.



Energy Rating D

Council Tax Band C

moreinfo...

Phillip Mann Newhaven Office  
16 Bridge Street, Newhaven, BN9 9PJ  
01273 517517



To see more details on this & all our homes go to  
[www.phillipmann.com](http://www.phillipmann.com)