

4  
BED

# Large Four Bedroom Bungalow On A Substantial Plot

St Marys, Wilmington Road, Newhaven, BN9 9TS



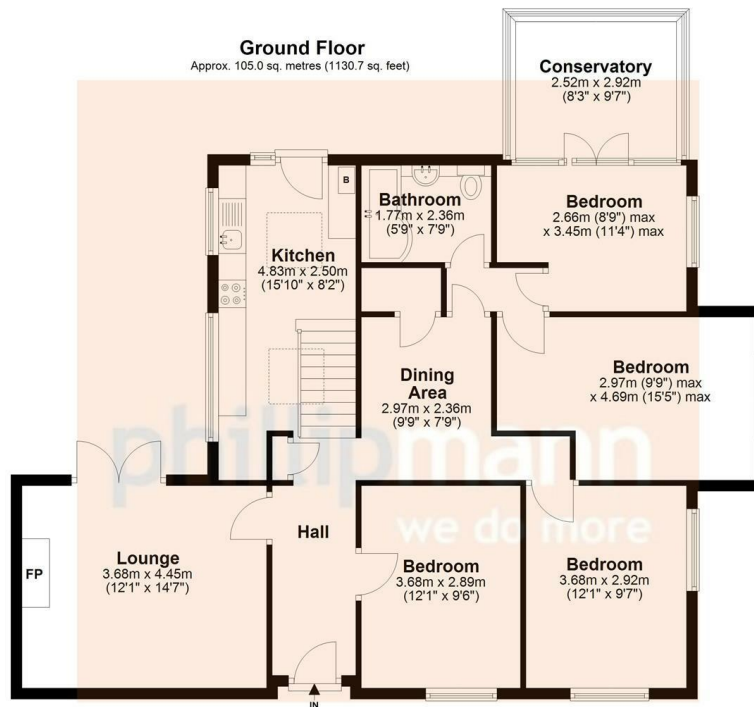
Guide Price £360,000

Freehold

**phillipmann**  
we do more

[www.phillipmann.com](http://www.phillipmann.com)





Total area: approx. 105.0 sq. metres (1130.7 sq. feet)

This floor plan is for illustrative purposes only. All measurements are approximate.

## inbrief...

Guide Price - £360,000-£380,000

Phillip Mann estate agents are delighted to offer for sale this four bedroom detached bungalow located on a large plot at Harbour Heights. The property does require some general updating and offers spacious accommodation throughout.

An entrance door gives access to a entrance hall which has several storage cupboards and doors to the accommodation. The lounge is a generous size room with a feature open brick fireplace and patio doors gives access to the rear garden. There is a unique dining area which overlooks the kitchen where there is ample space for a dining table. Steps lead down to a good size kitchen which is fitted with a range of wall and base units, there is a built in sink unit and there is ample of space for appliances. There is a wall mounted gas boiler, part tiled walls and a window overlooks the rear garden.

Bedroom One is a good size double which has ample space for wardrobes and a window overlooks the side. Bedroom two and three both are both doubles which overlook the front. Bedroom four is a further good size room which has access to a conservatory which overlooks and gives access to the rear garden. Completing the inside is a family bathroom which has a paneled bath, WC, bidet and a sink unit.

Outside the large garden is a particular feature of this property. There is a good size lawn area with a selection of established trees and plants.

The front offers off road parking for several cars.

The property has great potential to develop/extend subject to all of the usual consents.



Energy Rating D

Council Tax Band D

moreinfo...



Phillip Mann Newhaven Office  
16 Bridge Street, Newhaven, BN9 9PJ  
01273 517517

To see more details on this & all our homes go to  
[www.phillipmann.com](http://www.phillipmann.com)