

6
BED

Stunning House With Fantastic Views
19, Seaview Road, Newhaven, BN9 0NP



localknowledge...

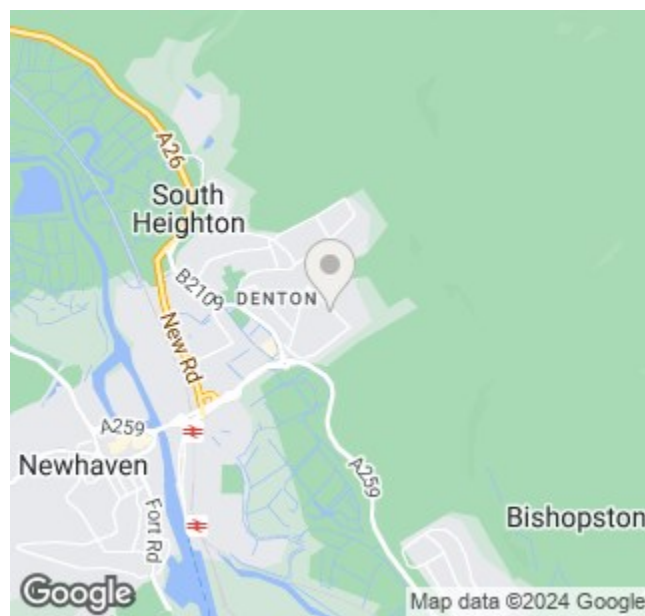
Seaview Road is located on Mount Pleasant. The South Downs National Park is just a few meters away and local schools are also within easy reach. Mainline bus routes to Brighton and Eastbourne are just a few minutes away as is the local Sainsburys supermarket and Newhaven train station.

moreinfo...

Phillip Mann Newhaven Office

16 Bridge Street, Newhaven, BN9 9PJ
01273 517517

To see more details on this & all our homes go to
www.phillipmann.com



we do more...
keeping
customers
happy

No.1 sellers
in Seaford, Newhaven
and Peacehaven

Price £699,950
Freehold

phillipmann
we do more

inbrief...

A large detached house with a stunning swimming pool complex. There is accommodation to include lounge/diner, kitchen, utility room, three ground floor bedrooms, bathroom, master bedroom with walk in dressing room and en-suite and two further bedrooms.

Style:	Detached House
Bedrooms:	Six
Reception rooms:	One
Area:	2763.5 SQ FT / 256.7 SQ MT
Outside:	Large Rear Garden With Sun Terrace
Parking:	Ample Off Road Parking
Energy rating:	D
Council Tax Band:	E

moredetail...

Phillip Mann estate agents are delighted to offer for sale this stunning Six bedroom detached residence with a fantastic swimming pool complex.

A part glazed door gives access to the entrance hall where there is a storage cupboard and doors which leads to the downstairs accommodation. The kitchen has a range of fitted wall and base units which incorporates a selection of cupboards and drawers. There is a built in sink unit which is set into worktops and a built in double oven and microwave. There is space for breakfast table, wood flooring and patio doors overlooking the sun terrace. A utility room leads off the kitchen which has further appliance space with a door to the rear. The lounge/diner is a stunning open family room with ample space for a dining table and further patio doors leading outside. There are three ground floor bedrooms which are all doubles and completing this level is a refitted family bathroom.

Upstairs there is a stunning master bedroom which has absolutely great views over Newhaven, Piddinghoe and beyond. There is access to a dressing room which has storage cupboards and hanging rails. From here a door gives access to a shower room which has a large shower cubicle, two wash hand basins and low level WC. Completing this level is two further double bedrooms which overlooks the rear with stunning views.

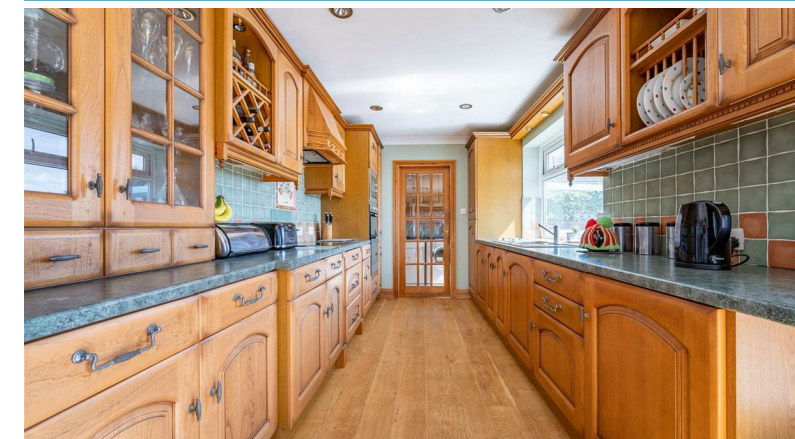
A particular feature of this house is the swimming pool complex which has a large swimming pool along with a shower room, sauna and wet room.

Outside there is a large sun terrace which is South facing with ample space outside garden furniture. From here there are steps which lead down to an area of lawn which is very secluded. There is also the added bonus of a large under house storage which has ample storage space and the plumbing for the swimming pool.

The front has ample off road parking and a large area of lawn. The front is brick wall enclosed.

What the owner says...

We will dearly miss the house and the space that it offers. The swimming pool complex has been great with the children over the years.



To arrange a viewing or find out more information about the property please contact the Newhaven office on 01273 517517.



Bear in mind...

There are three bedrooms on the ground floor, one bedroom which could be easily converted to a en-suite bathroom if needed.