



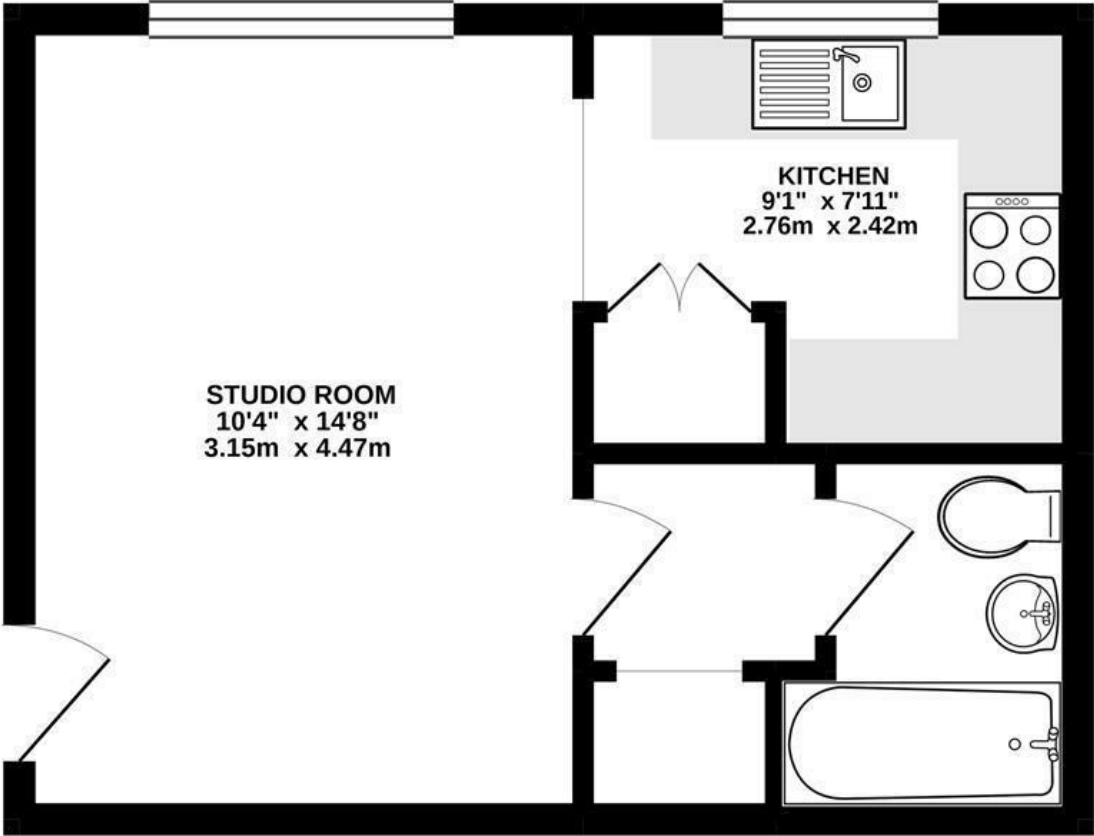
Merrivale Mews, Tavistock Road, West Drayton, UB7 7LY

- Studio apartment
- Close to train station
- Available for early November
- Furnished
- EPC Rating - C
- Ground floor

£995 PCM

Cameron are delighted to offer to the market this ground floor studio flat in this popular location close to the river Fray and approximately 0.4 of a mile from West Drayton main line train station. The accommodation consists of a studio room, fitted kitchen with appliances, bathroom suite with shower. The property also benefits from communal gardens and and parking. Available early November and presented furnished.

GROUND FLOOR
284 sq.ft. (26.4 sq.m.) approx.



TOTAL FLOOR AREA : 284 sq.ft. (26.4 sq.m.) approx.
Whilst every attempt has been made to ensure the accuracy of the floorplan contained here, measurements of doors, windows, rooms and any other items are approximate and no responsibility is taken for any error, omission or mis-statement. This plan is for illustrative purposes only and should be used as such by any prospective purchaser. The services, systems and appliances shown have not been tested and no guarantee as to their operability or efficiency can be given.
Made with Metropix ©2021

IMPORTANT NOTICE

These particulars have been prepared upon information supplied by the Vendor and should be verified by your surveyors and solicitors. We have prepared these sales particulars as a general guide to give a broad description of the property. They are not intended to constitute part of an offer or contract. We have not carried out a structural survey and the services, appliances and specific fittings have not been tested. All photographs, measurements, floor plans and distances referred to are given as a guide only and should not be relied upon for the purchase of carpets or any other fixtures or fittings. Lease details service charge and ground rent (where applicable) are given as a guide only and should be checked and confirmed by your solicitor prior to exchange of contracts