



Colham Avenue, Yiewsley, UB7 8EU

- 3 Bedrooms
- Separate kitchen and Living room
- Rear Communal Garden
- First Floor
- Walking distance to schools

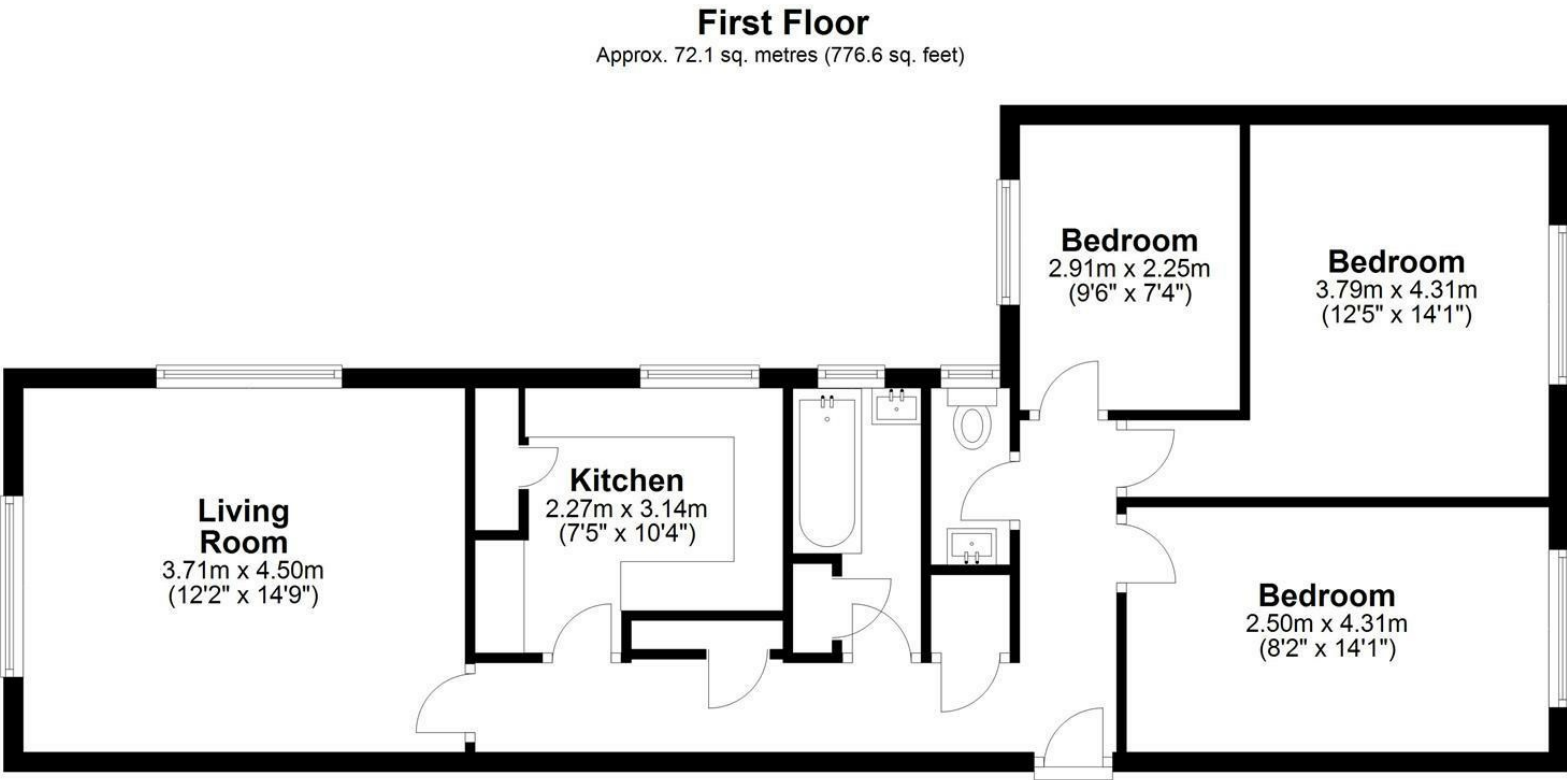
Asking Price £300,000

Situation

West Drayton offers excellent transport links. The area benefits from quick access to central London, with journeys to Bond Street from West Drayton taking just 30 minutes. Additionally, Heathrow Airport is just a short drive away, making international travel easily accessible. With good local bus services and road connections, including the M4 and M25, West Drayton offers exceptional transportation options for residents. Combined with local amenities such as shops, schools, and green spaces

Terms and notification of sale

Tenure: Freehold
Local Authority: London Borough of Hillingdon
Council tax band: C
EPC rating: D



Total area: approx. 72.1 sq. metres (776.6 sq. feet)

IMPORTANT NOTICE

These particulars have been prepared upon information supplied by the Vendor and should be verified by your surveyors and solicitors. We have prepared these sales particulars as a general guide to give a broad description of the property. They are not intended to constitute part of an offer or contract. We have not carried out a structural survey and the services, appliances and specific fittings have not been tested. All photographs, measurements, floor plans and distances referred to are given as a guide only and should not be relied upon for the purchase of carpets or any other fixtures or fittings. Lease details service charge and ground rent (where applicable) are given as a guide only and should be checked and confirmed by your solicitor prior to exchange of contracts