

Park Lodge Avenue, West Drayton, UB7 9DG

- Penthouse
- Nearly 1,200 sq.ft. of living space
- Balcony
- Undercroft parking
- No upper chain
- Two double bedrooms
- En suite bathroom
- Long lease
- Gym & concierge service
- Close to local amenities

Offers In Excess Of £350,000

Description

This penthouse is not just a place to live; it is a lifestyle choice that combines luxury, comfort and convenience in one of West Drayton's most sought-after locations. The apartment features two well-proportioned double bedrooms, providing ample living space for relaxation. If you are looking for a unique apartment with a larger than average size, then this ticks all the boxes.

Location

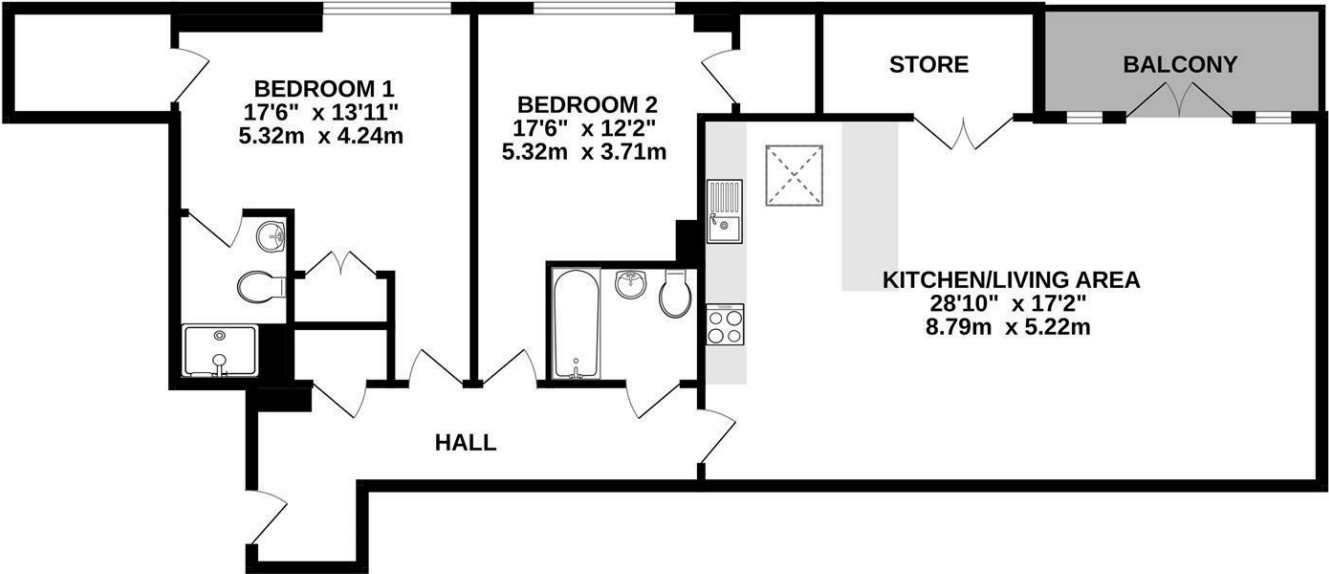
West Drayton's position on the western edge of the Capital means that it is superbly placed to access Central London with ease. With frequent services to London Paddington in less than 25 minutes from the West Drayton Mainline Train Station with the Elizabeth Line upgrade, which will bring West Drayton to within a 40 minute train journey to Canary Wharf and will give regular access to the center of London. The property also has convenient vehicular access to the M25 and M4 motorways. The property is within walking distance to local shops, great schools, local bus routes and a short bus ride to West Drayton Town Centre.

Terms and notification of sale

Tenure: Leasehold
Local Authority: London Borough of Hillingdon
Council tax band: D
EPC rating: C

Lease term: 981 years remaining
Service charge: £3,000 per annum approx
Ground rent: £350 per annum

GROUND FLOOR
1142 sq.ft. (106.1 sq.m.) approx.



TOTAL FLOOR AREA : 1142 sq.ft. (106.1 sq.m.) approx.
Whilst every attempt has been made to ensure the accuracy of the floorplan contained here, measurements of doors, windows, rooms and any other items are approximate and no responsibility is taken for any error, omission or mis-statement. This plan is for illustrative purposes only and should be used as such by any prospective purchaser. The services, systems and appliances shown have not been tested and no guarantee as to their operability or efficiency can be given.
Made with Metropix ©2025

IMPORTANT NOTICE

These particulars have been prepared upon information supplied by the Vendor and should be verified by your surveyors and solicitors. We have prepared these sales particulars as a general guide to give a broad description of the property. They are not intended to constitute part of an offer or contract. We have not carried out a structural survey and the services, appliances and specific fittings have not been tested. All photographs, measurements, floor plans and distances referred to are given as a guide only and should not be relied upon for the purchase of carpets or any other fixtures or fittings. Lease details service charge and ground rent (where applicable) are given as a guide only and should be checked and confirmed by your solicitor prior to exchange of contracts