



Garden Court, 70 Station Road, West Drayton, UB7 7FA

- Two bedroom apartment
- Ground floor
- No upper chain
- Walking distance to West Drayton station (Elizabeth Line)
- En suite
- Underground allocated parking bay
- EPC Rating -B
- Lovely condition throughout

Asking Price £279,950

Description

A modern and stylish 741 sq.ft. two-bedroom ground floor set on a sought-after modern block, just minutes away from West Drayton station (Elizabeth Line)

Accommodation

The apartment offers ample and cleverly designed living space including a living/dining room with open plan integrated kitchen, a master bedroom with a modern en-suite shower room, a second substantial bedroom and a contemporary family bathroom.

Outside

This property benefits from private patio and one under-croft parking bay.

Location

West Drayton's position on the western edge of the Capital means that it is superbly placed to access Central London with ease, with frequent services to London Paddington in less than 25 minutes from West Drayton's Mainline Station. The property is situated in one of the most popular locations and offers the convenience of an excellent local bus service which is accessed on the main road. The station is within walking distance which is due to benefit from the Elizabeth line and offers excellent access to London's Paddington. Other benefits include good access to West Drayton High street, Yiewsley and Uxbridge with their wide range of shopping facilities and amenities. There is also excellent access to Stockley Business Park, local bus routes, London International Heathrow Airport, M4, M40 and M25 motorways.

Terms and notification of sale

Tenure: Leasehold

Local Authority: London Borough of Hillingdon

Council tax band: D

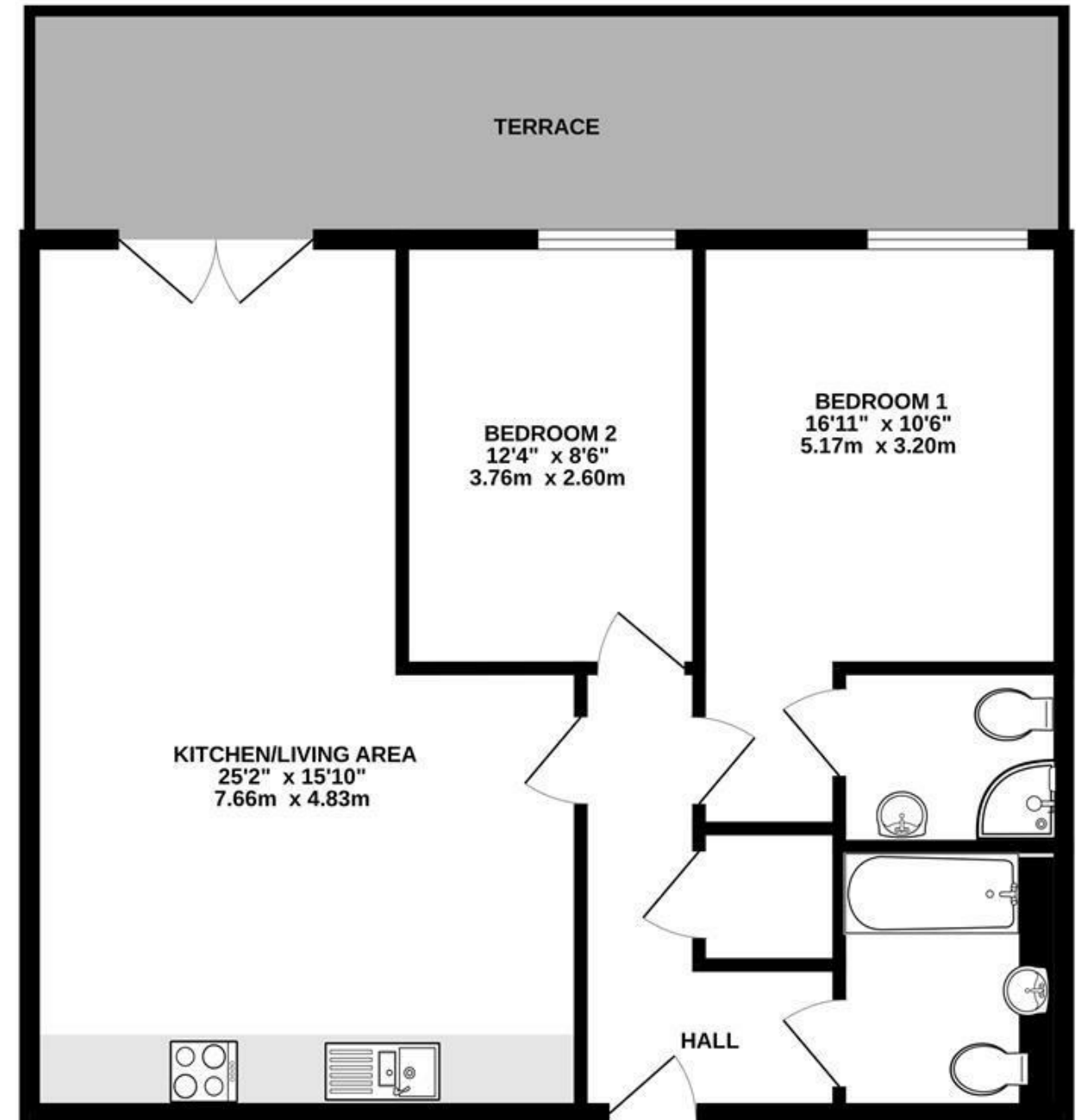
EPC rating: B

Lease term: 117 years remaining

Service charge: £4,000 per annum

Ground rent: £300 per annum

GROUND FLOOR
741 sq.ft. (68.8 sq.m.) approx.



TOTAL FLOOR AREA : 741 sq.ft. (68.8 sq.m.) approx.
Whilst every attempt has been made to ensure the accuracy of the floorplan contained here, measurements of doors, windows, rooms and any other items are approximate and no responsibility is taken for any error, omission or mis-statement. This plan is for illustrative purposes only and should be used as such by any prospective purchaser. The services, systems and appliances shown have not been tested and no guarantee as to their operability or efficiency can be given.
Made with Metropix ©2024

IMPORTANT NOTICE

These particulars have been prepared upon information supplied by the Vendor and should be verified by your surveyors and solicitors. We have prepared these sales particulars as a general guide to give a broad description of the property. They are not intended to constitute part of an offer or contract. We have not carried out a structural survey and the services, appliances and specific fittings have not been tested. All photographs, measurements, floor plans and distances referred to are given as a guide only and should not be relied upon for the purchase of carpets or any other fixtures or fittings. Lease details service charge and ground rent (where applicable) are given as a guide only and should be checked and confirmed by your solicitor prior to exchange of contracts