



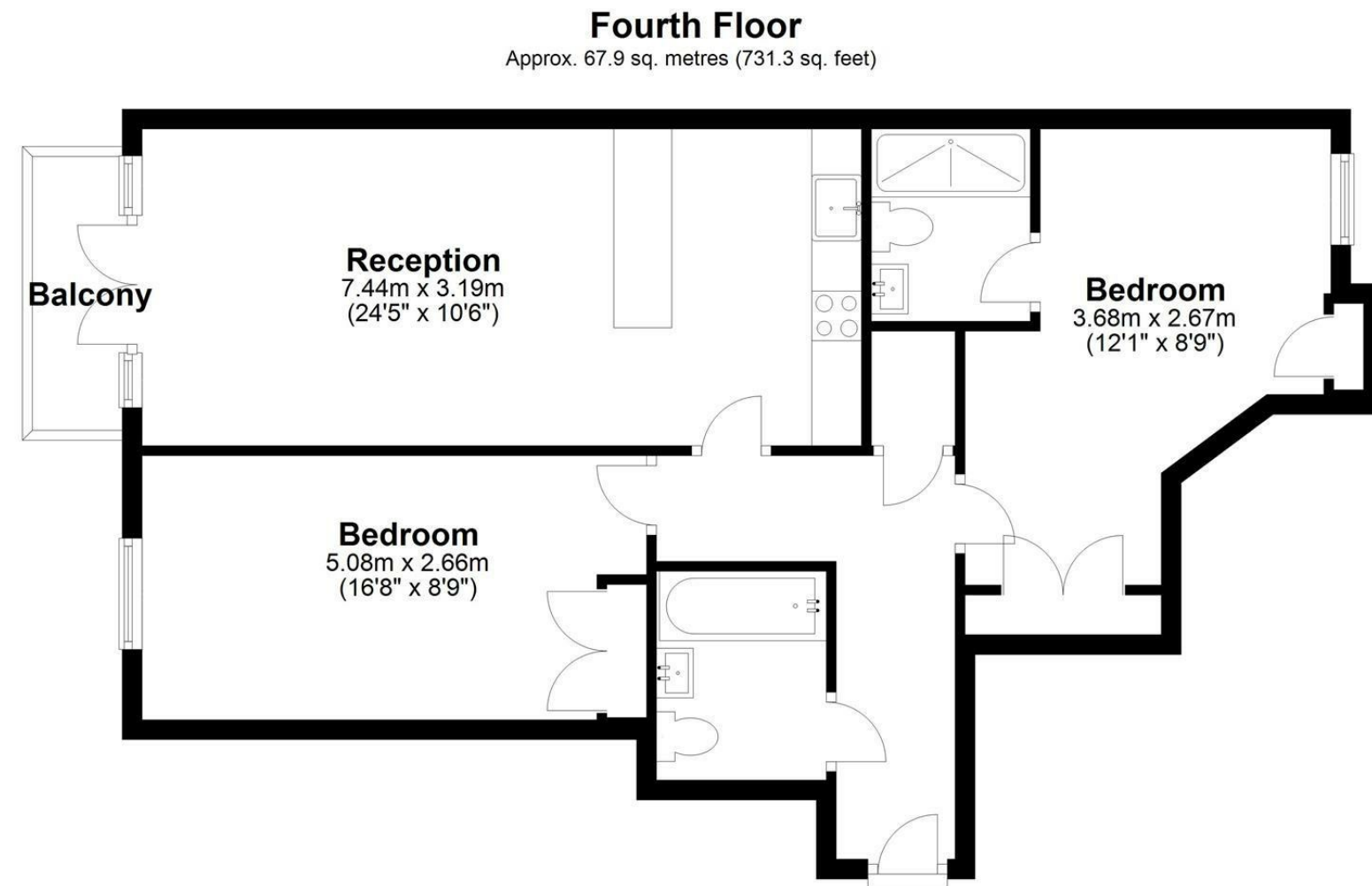
## Lexington House, 35 Park Lodge Avenue, West Drayton,

- Parkwest
- Two bedrooms
- INCLUSIVE OF COUNCIL TAX
- Concierge
- Furnished
- Balcony
- En suite
- Residents Gym
- EPC Rating- C
- Available for October

**£1,900 PCM**

**Description**

Cameron Estate Agents are pleased to offer to the market this two bedroom apartment located on the fourth floor. The property comprises of two double bedrooms, two bathrooms, large living room with balcony, luxury fully fitted kitchen, luxury bathroom. Further benefits include landscaped communal gardens, concierge and residents gym. Presented furnished and available for October. Inclusive of Council tax.



**Fourth Floor**  
Approx. 67.9 sq. metres (731.3 sq. feet)

Total area: approx. 67.9 sq. metres (731.3 sq. feet)

**IMPORTANT NOTICE**

These particulars have been prepared upon information supplied by the Vendor and should be verified by your surveyors and solicitors. We have prepared these sales particulars as a general guide to give a broad description of the property. They are not intended to constitute part of an offer or contract. We have not carried out a structural survey and the services, appliances and specific fittings have not been tested. All photographs, measurements, floor plans and distances referred to are given as a guide only and should not be relied upon for the purchase of carpets or any other fixtures or fittings. Lease details service charge and ground rent (where applicable) are given as a guide only and should be checked and confirmed by your solicitor prior to exchange of contracts