



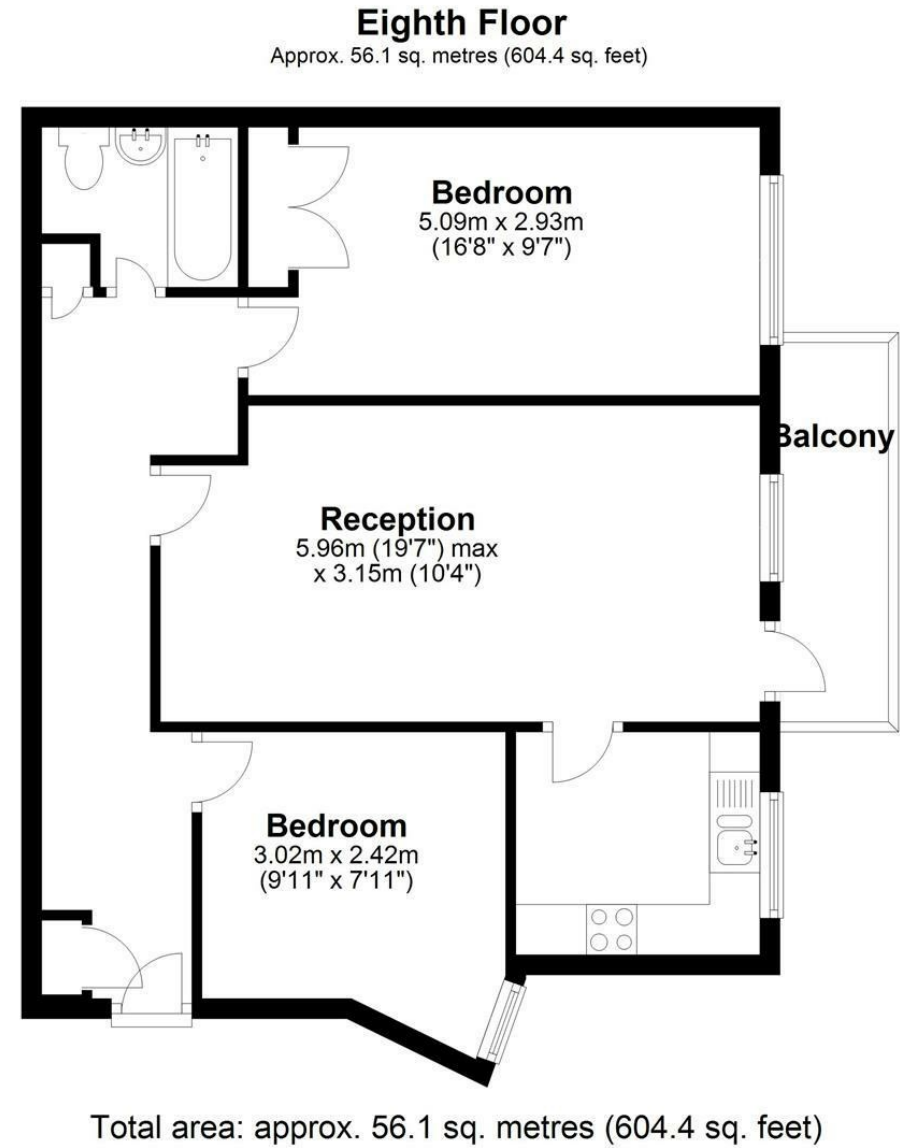
## Union Wharf, Bentinck Road, Yiewsley, UB7 7RP

- Top floor
- Secure gated parking
- Unfurnished
- Two bedrooms
- Moments away from the station
- EPC Rating- C

**£1,650 PCM**

**Description**

An impressive large two bedroom eighth floor apartment located off the high street within a two minute walk to the West Drayton train station. This bright light filled property offers neutral colours throughout and is presented in a prestige condition. Benefits include secure gated parking, secure entry system, lifts, large balcony and gas central heating. Offered to the market unfurnished and available October.



**IMPORTANT NOTICE**

These particulars have been prepared upon information supplied by the Vendor and should be verified by your surveyors and solicitors. We have prepared these sales particulars as a general guide to give a broad description of the property. They are not intended to constitute part of an offer or contract. We have not carried out a structural survey and the services, appliances and specific fittings have not been tested. All photographs, measurements, floor plans and distances referred to are given as a guide only and should not be relied upon for the purchase of carpets or any other fixtures or fittings. Lease details service charge and ground rent (where applicable) are given as a guide only and should be checked and confirmed by your solicitor prior to exchange of contracts