



Hawthorne Crescent, West Drayton, Middlesex, UB7 9PA

- Studio apartment
- Allocated parking
- Great investment opportunity
- First floor
- Close to local amenities
- No onward chain

Auction Guide £100,000

Description

A great opportunity to purchase this ground studio apartment located in a quiet residential area, benefiting from being close to local amenities and a short walk from West Drayton station (Elizabeth Line).

Location

Situated in West Drayton, this studio apartment enjoys a prime location with easy access to a range of local amenities, including shops, restaurants, and transport links. The area offers excellent connectivity, with nearby train stations providing direct links to London and beyond.

Terms and notification of sale

Tenure: Leasehold

Local Authority: London Borough of Hillingdon

Council tax band: B

EPC rating: C

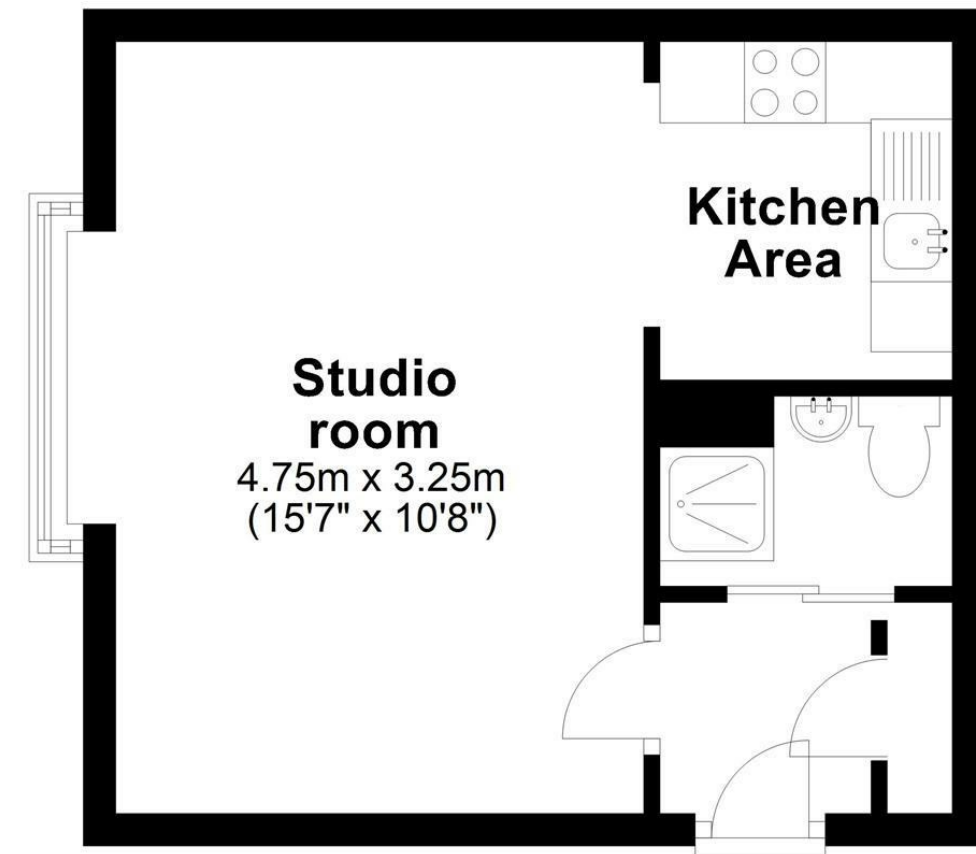
Lease term: 89 years remaining

Service charge: £1,112 per annum approx.

Ground rent: £0 per annum

First Floor

Approx. 24.7 sq. metres (266.2 sq. feet)



Total area: approx. 24.7 sq. metres (266.2 sq. feet)

IMPORTANT NOTICE

These particulars have been prepared upon information supplied by the Vendor and should be verified by your surveyors and solicitors. We have prepared these sales particulars as a general guide to give a broad description of the property. They are not intended to constitute part of an offer or contract. We have not carried out a structural survey and the services, appliances and specific fittings have not been tested. All photographs, measurements, floor plans and distances referred to are given as a guide only and should not be relied upon for the purchase of carpets or any other fixtures or fittings. Lease details service charge and ground rent (where applicable) are given as a guide only and should be checked and confirmed by your solicitor prior to exchange of contracts