



41 Autumn Way, West Drayton, UB7 9GS

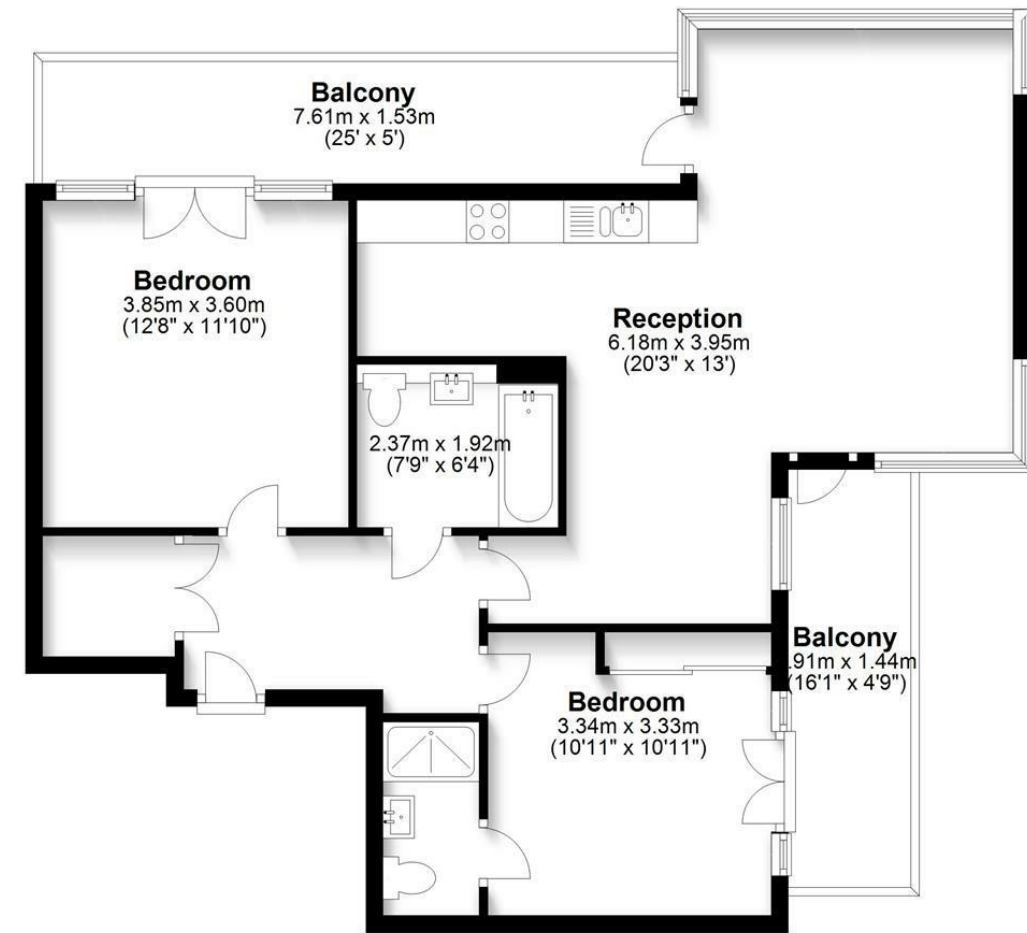
- Drayton Garden Village
- Two balconies
- Parking
- Access to Train station
- Penthouse apartment
- Well lit with natural sunlight
- Available
- EPC Rating- B

£1,800 PCM

Description

Offered to the market for the first time is this spectacular two double bedroom penthouse apartment in the eco friendly and popular development, Drayton Garden Village. This unique property provides two large balconies, spacious open plan living with dining area, modern bathroom and en suite shower room to bedroom one, parking and access to the High Street and Train Station. Further benefits include an on site supermarket and several communal gardens within the development. Finished to a very good standard, well furnished throughout and available NOW. Must be seen.

Third Floor
Approx. 76.7 sq. metres (825.6 sq. feet)



Total area: approx. 76.7 sq. metres (825.6 sq. feet)

IMPORTANT NOTICE

These particulars have been prepared upon information supplied by the Vendor and should be verified by your surveyors and solicitors. We have prepared these sales particulars as a general guide to give a broad description of the property. They are not intended to constitute part of an offer or contract. We have not carried out a structural survey and the services, appliances and specific fittings have not been tested. All photographs, measurements, floor plans and distances referred to are given as a guide only and should not be relied upon for the purchase of carpets or any other fixtures or fittings. Lease details service charge and ground rent (where applicable) are given as a guide only and should be checked and confirmed by your solicitor prior to exchange of contracts