

Heron Drive, Slough, SL3 8FA

- Studio apartment
- Allocated parking bay
- Long lease
- Communal gardens
- Ground floor
- Over 450 sq.ft. of living space
- Approximately 1.0 mile to Langley railway station (Elizabeth Line)
- Gated development

Asking Price £205,000

Description

Whether you're a first-time buyer or looking for a smart investment opportunity, this modern studio which spans over 450 sq.ft. of living space and is in excellent condition, ready to welcome its new owners. Situated in a gated development, this property not only offers security and privacy but also a sense of community.

Location

Hurricane Court is ideally located within walking distance to local shops, services and amenities. The leisure centre is metres away offering swimming and gym facilities, whilst Langley railway and Elizabeth line station approximately 0.9 of a mile away.

Terms and notification of sale

Tenure: Leasehold

Local Authority: London Borough of Hillingdon

Council tax band: B

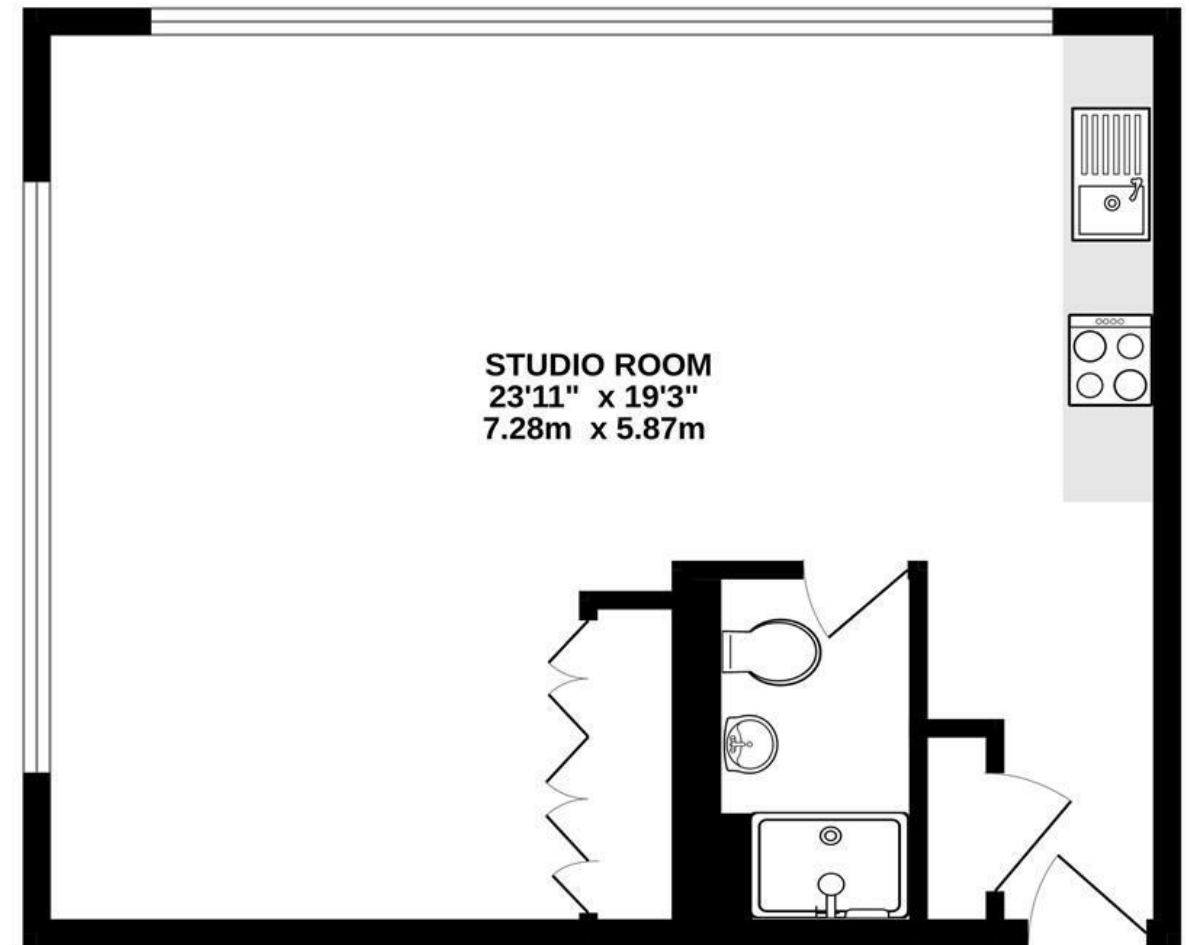
EPC rating: C

Lease term: 996 years remaining

Service charge: £1,600 per annum

Ground rent: £0

GROUND FLOOR
453 sq.ft. (42.1 sq.m.) approx.



TOTAL FLOOR AREA : 453 sq.ft. (42.1 sq.m.) approx.

Whilst every attempt has been made to ensure the accuracy of the floorplan contained here, measurements of doors, windows, rooms and any other items are approximate and no responsibility is taken for any error, omission or mis-statement. This plan is for illustrative purposes only and should be used as such by any prospective purchaser. The services, systems and appliances shown have not been tested and no guarantee as to their operability or efficiency can be given.
Made with Metropix ©2024

IMPORTANT NOTICE

These particulars have been prepared upon information supplied by the Vendor and should be verified by your surveyors and solicitors. We have prepared these sales particulars as a general guide to give a broad description of the property. They are not intended to constitute part of an offer or contract. We have not carried out a structural survey and the services, appliances and specific fittings have not been tested. All photographs, measurements, floor plans and distances referred to are given as a guide only and should not be relied upon for the purchase of carpets or any other fixtures or fittings. Lease details service charge and ground rent (where applicable) are given as a guide only and should be checked and confirmed by your solicitor prior to exchange of contracts