



Arlington House, 1 Park Lodge Avenue, West Drayton,

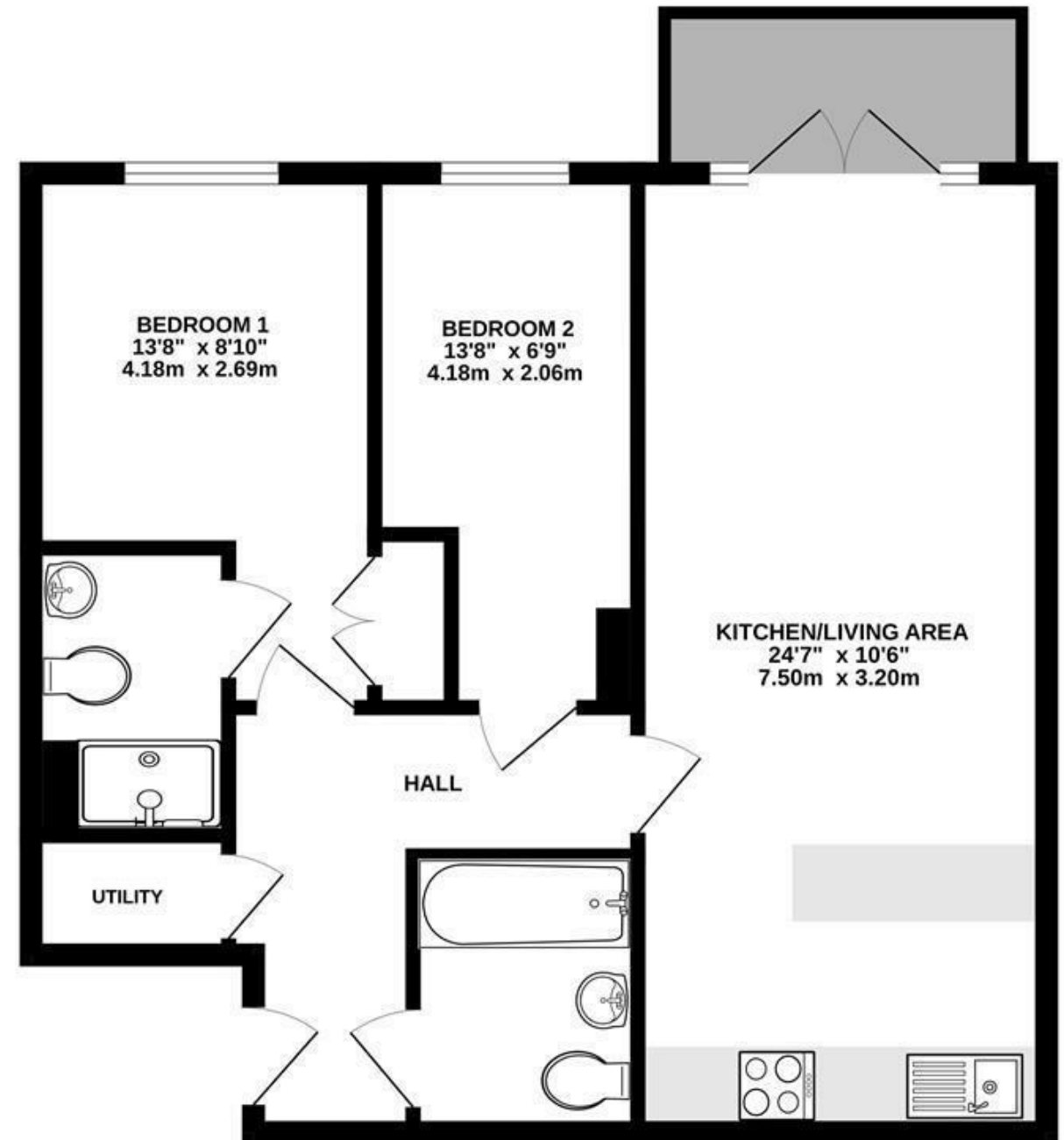
- Parkwest
- En suite
- Residents gym
- Available for October
- Two bedrooms
- Furnished
- Concierge service
- EPC Rating - C

£1,750 PCM

Description

Cameron Estate Agents are delighted to present this two bedroom first floor apartment located within the popular "Parkwest" development set close to Heathrow Airport, M4, Stockley Business Park and Hillingdon Hospital. The apartment boasts a large reception room with open plan kitchen area, two double bedrooms, two bathrooms (one en-suite) and plenty of storage space. The development also offers residents twenty four hour concierge facilities, gymnasium and beautifully maintained communal gardens. Available for October and presented furnished.

First Floor
611 sq.ft. (56.7 sq.m.) approx.



TOTAL FLOOR AREA : 611 sq.ft. (56.7 sq.m.) approx.
Whilst every attempt has been made to ensure the accuracy of the floorplan contained here, measurements of doors, windows, rooms and any other items are approximate and no responsibility is taken for any error, omission or mis-statement. This plan is for illustrative purposes only and should be used as such by any prospective purchaser. The services, systems and appliances shown have not been tested and no guarantee as to their operability or efficiency can be given.
Made with Metropix ©2023

IMPORTANT NOTICE

These particulars have been prepared upon information supplied by the Vendor and should be verified by your surveyors and solicitors. We have prepared these sales particulars as a general guide to give a broad description of the property. They are not intended to constitute part of an offer or contract. We have not carried out a structural survey and the services, appliances and specific fittings have not been tested. All photographs, measurements, floor plans and distances referred to are given as a guide only and should not be relied upon for the purchase of carpets or any other fixtures or fittings. Lease details service charge and ground rent (where applicable) are given as a guide only and should be checked and confirmed by your solicitor prior to exchange of contracts