



1 Wintergreen Boulevard, West Drayton, UB7 9FQ

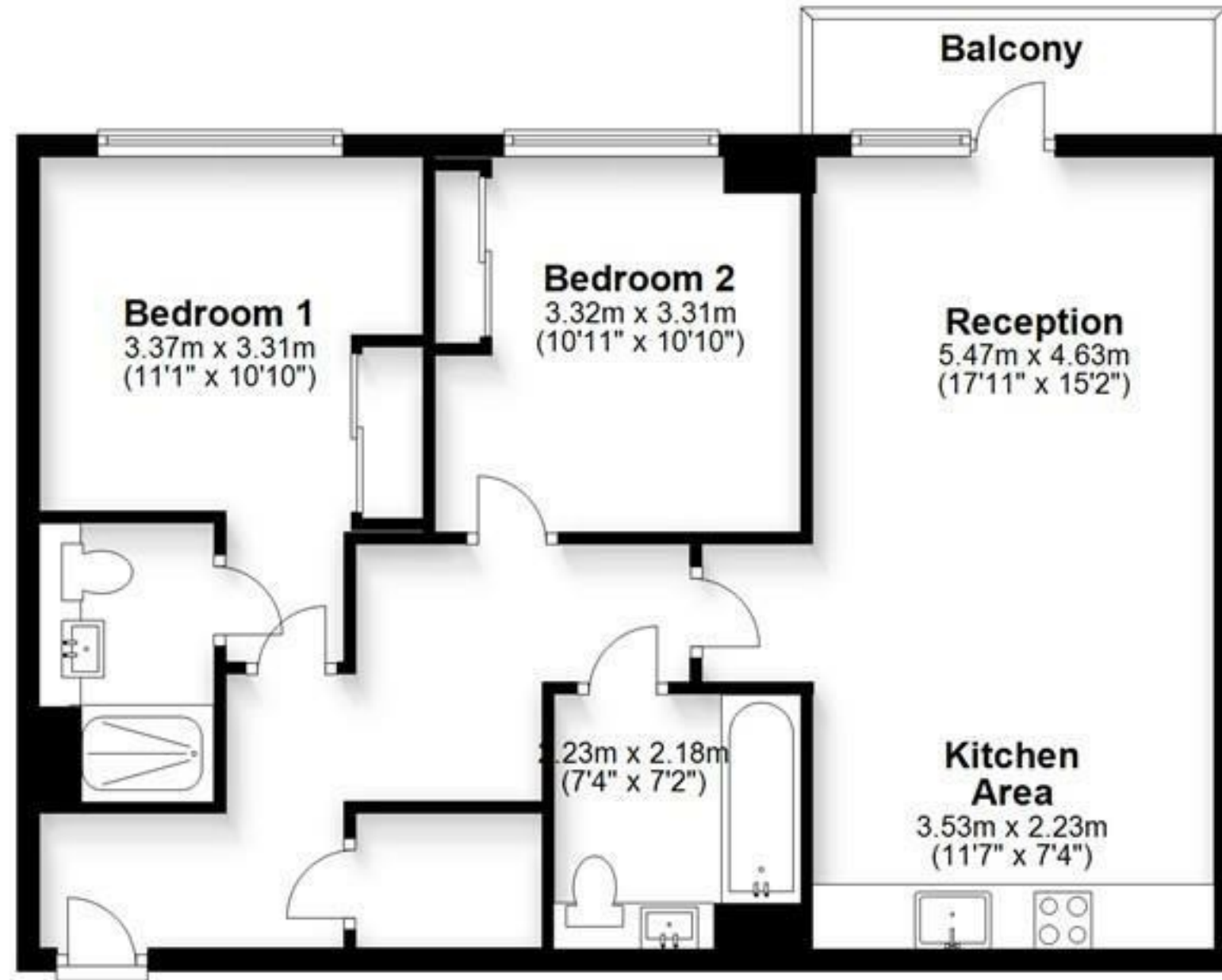
- Top floor
- Immaculate condition
- Available for September
- Drayton Garden Village
- Large two bedroom apartment
- Furnished
- Parking
- EPC Rating- B

£1,900 PCM

Description

An immaculate large two bedroom penthouse apartment situated in the ever popular Drayton Garden Village development. The property comprises two double bedrooms and two fully fitted bathrooms (one being en-suite). A modern integrated kitchen which is open plan to the spacious living room leading on to a large balcony. Further advantages include secure phone entry system, allocated parking and ample storage. Moments from West Drayton mainline train station and also benefits from having good road access to Heathrow international airport, Stockley Park and the M4 and M25 Motorways. This apartment is presented furnished to a high standard and available for September.

Third Floor
Approx. 81.2 sq. metres (873.8 sq. feet)



Total area: approx. 81.2 sq. metres (873.8 sq. feet)

IMPORTANT NOTICE

These particulars have been prepared upon information supplied by the Vendor and should be verified by your surveyors and solicitors. We have prepared these sales particulars as a general guide to give a broad description of the property. They are not intended to constitute part of an offer or contract. We have not carried out a structural survey and the services, appliances and specific fittings have not been tested. All photographs, measurements, floor plans and distances referred to are given as a guide only and should not be relied upon for the purchase of carpets or any other fixtures or fittings. Lease details service charge and ground rent (where applicable) are given as a guide only and should be checked and confirmed by your solicitor prior to exchange of contracts