



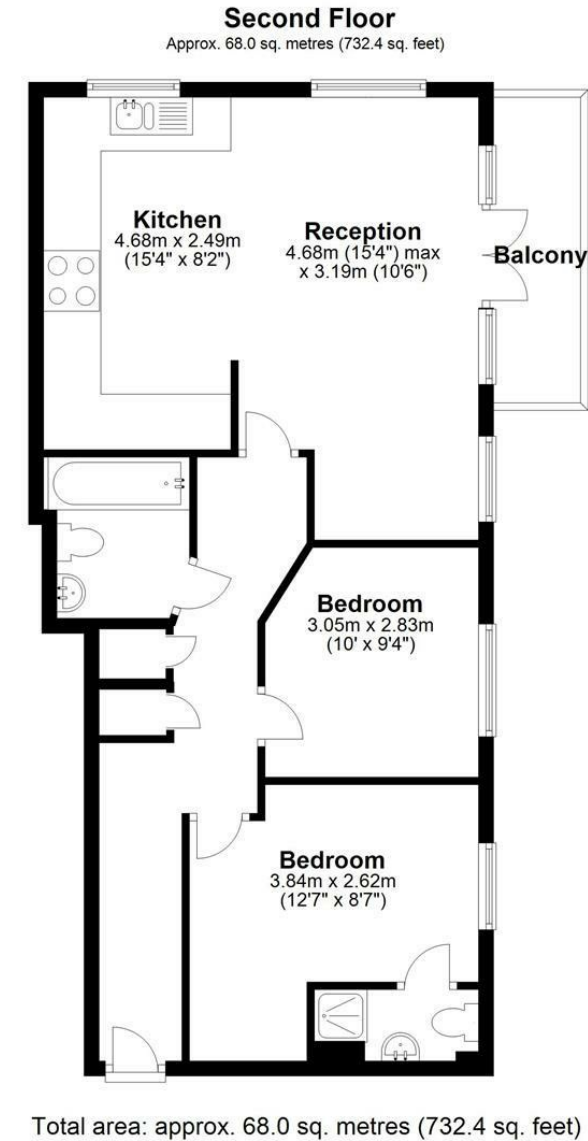
## Wraysbury Drive, Yiewsley, West Drayton, UB7 7FE

- Crest House
- En suite
- Lifts
- Balcony
- EPC Rating- D
- Two bedroom
- Top floor
- Part furnished
- Parking
- Available September

**£1,650 PCM**

**Description**

A two double bedroom top floor apartment located within a popular canal side development. This apartment offers two double bedrooms with an en suite to bedroom one, fitted kitchen with built in appliances open to the reception and a family bathroom. Further benefits include allocated parking. Located within a short walk to the highly desirable Elizabeth Train station, High Street and easy access to Stockley Business Park. Available for September and presented Part furnished.



**IMPORTANT NOTICE**

These particulars have been prepared upon information supplied by the Vendor and should be verified by your surveyors and solicitors. We have prepared these sales particulars as a general guide to give a broad description of the property. They are not intended to constitute part of an offer or contract. We have not carried out a structural survey and the services, appliances and specific fittings have not been tested. All photographs, measurements, floor plans and distances referred to are given as a guide only and should not be relied upon for the purchase of carpets or any other fixtures or fittings. Lease details service charge and ground rent (where applicable) are given as a guide only and should be checked and confirmed by your solicitor prior to exchange of contracts