

Fairfield Road, Yiewsley, UB7 8FD

- Zeus Court
- Secure basement parking
- Stunning condition
- Two balconies
- Available for September
- High street location
- Two double bedrooms
- En suite
- EPC Rating- C
- Communal outdoor space

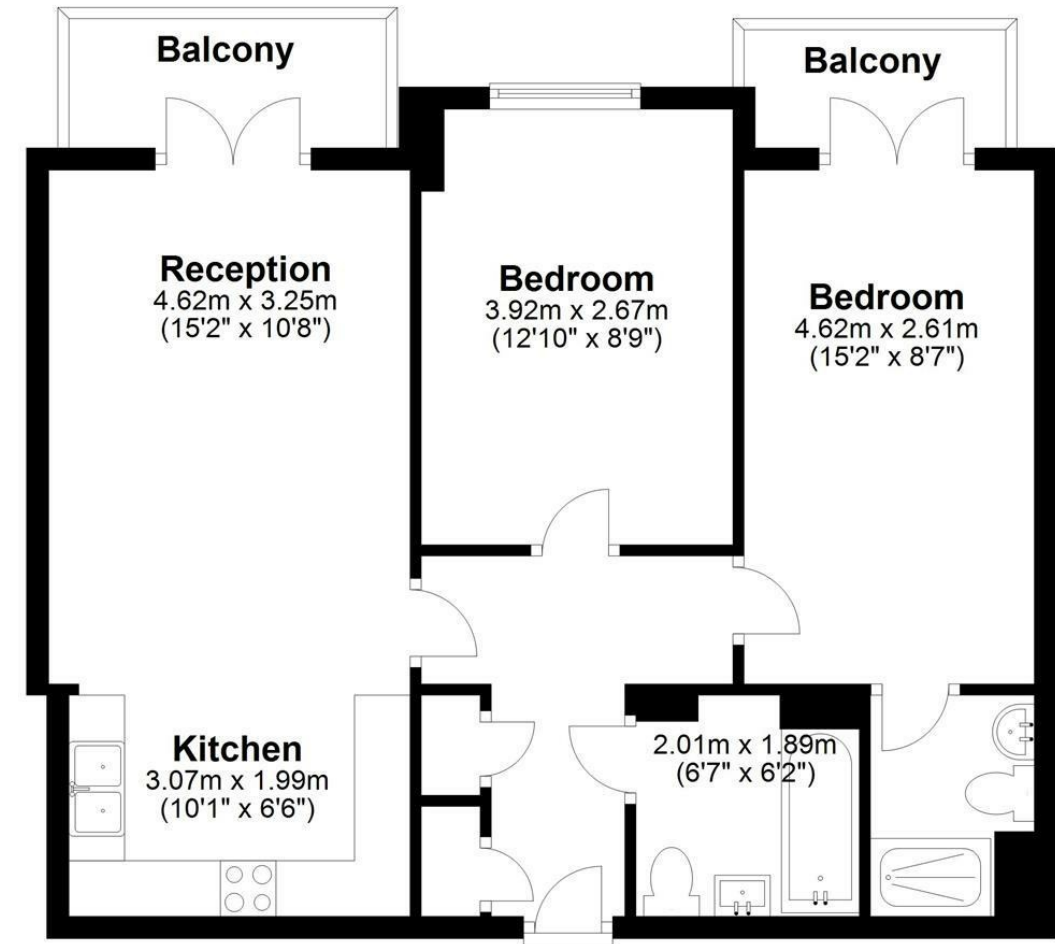
£1,850 PCM

Description

Offered to the market for the first time, this fine example of a two bedroom apartment to located on Yiewsley High Street. This first floor apartment provides two double bedrooms with an en-suite to bedroom one, open plan reception with a fitted kitchen that includes built in appliances and stone work tops, two balconies, storage and secure basement parking. Great for those wanting convenience of the train station, local amenities and bus routes. Further benefits include, communal out door area, video entry and lifts. Presented furnished as seen and available for mid September.

First Floor

Approx. 54.5 sq. metres (587.1 sq. feet)



Total area: approx. 54.5 sq. metres (587.1 sq. feet)

IMPORTANT NOTICE

These particulars have been prepared upon information supplied by the Vendor and should be verified by your surveyors and solicitors. We have prepared these sales particulars as a general guide to give a broad description of the property. They are not intended to constitute part of an offer or contract. We have not carried out a structural survey and the services, appliances and specific fittings have not been tested. All photographs, measurements, floor plans and distances referred to are given as a guide only and should not be relied upon for the purchase of carpets or any other fixtures or fittings. Lease details service charge and ground rent (where applicable) are given as a guide only and should be checked and confirmed by your solicitor prior to exchange of contracts