



Lupin Close, West Drayton, UB7 7UY

- Ground floor
- Furnished
- EPC Rating - D
- Private garden
- Available now
- Residents parking

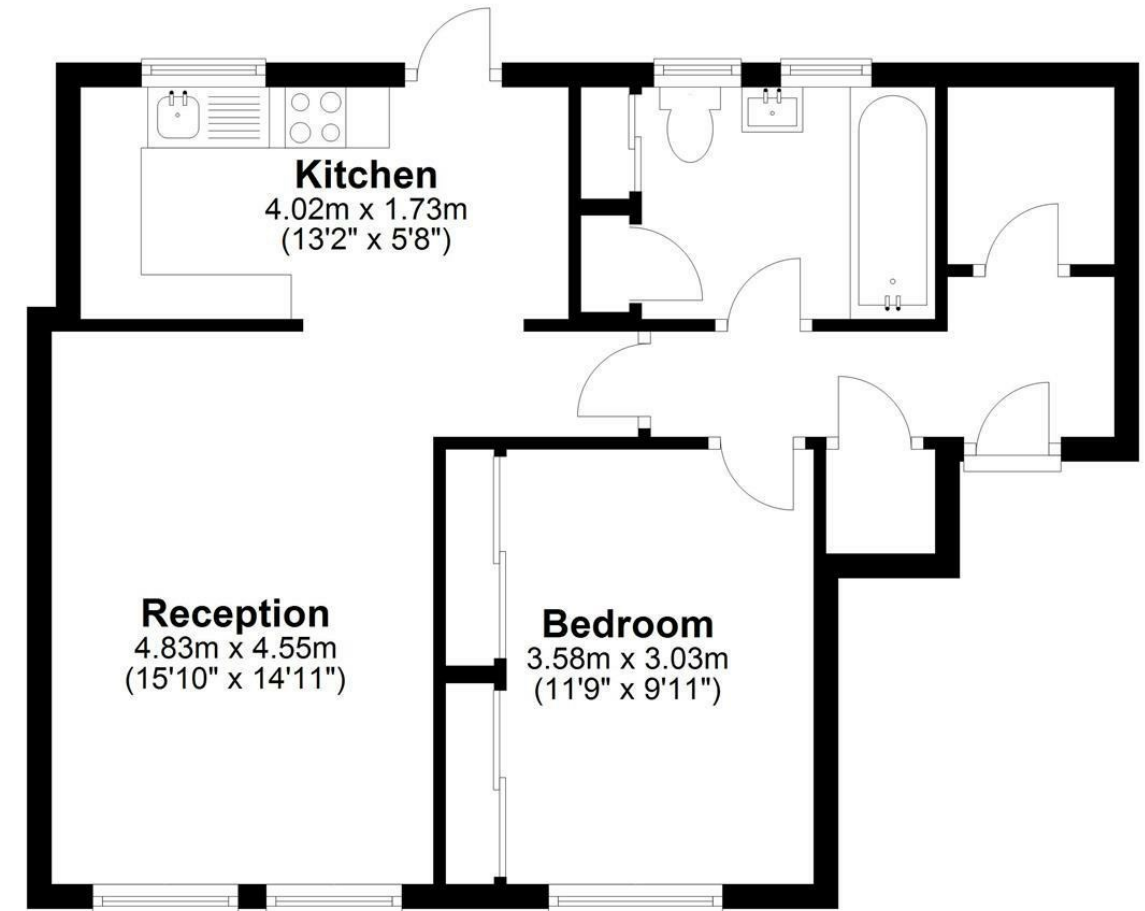
£1,300 PCM

Description

A charming one bedroom ground floor maisonette located in a residential and peaceful area. Offer to the market for the first time and benefits from a private rear garden leading from the kitchen, ample storage space, double bedroom with fitted wardrobes, reception and kitchen with white goods. Double glazed windows, residents parking, new carpets to the hallway and bedroom. Presented furnished and available NOW.

Ground Floor

Approx. 48.0 sq. metres (517.1 sq. feet)



Total area: approx. 48.0 sq. metres (517.1 sq. feet)

IMPORTANT NOTICE

These particulars have been prepared upon information supplied by the Vendor and should be verified by your surveyors and solicitors. We have prepared these sales particulars as a general guide to give a broad description of the property. They are not intended to constitute part of an offer or contract. We have not carried out a structural survey and the services, appliances and specific fittings have not been tested. All photographs, measurements, floor plans and distances referred to are given as a guide only and should not be relied upon for the purchase of carpets or any other fixtures or fittings. Lease details service charge and ground rent (where applicable) are given as a guide only and should be checked and confirmed by your solicitor prior to exchange of contracts