



15 Park Lodge Avenue, West Drayton, UB7 9FR

- Parkwest
- Garden views from Balcony
- Available June
- EPC Rating - B
- Third floor
- Manhattan style one bedroom apartment
- Concierge and Gym
- Parking

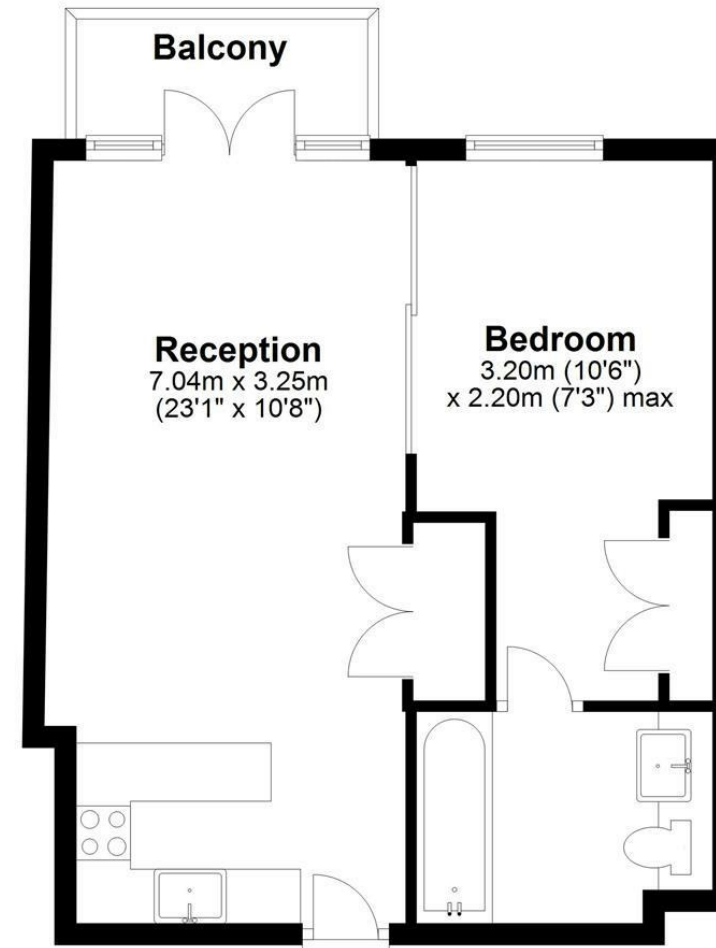
£1,350 PCM

Description

A Manhattan style one bedroom apartment in the popular Parkwest development. Presented furnished, built in white goods including a dishwasher, balcony with views over the communal grounds, a 24 hour concierge service and free residents gym. Further benefits include parking, cycle store and a number of landscaped communal grounds. Access to West Drayton, Train Station, Heathrow and Stockley Business Park. Available for June.

Third Floor

Approx. 37.2 sq. metres (400.5 sq. feet)



Total area: approx. 37.2 sq. metres (400.5 sq. feet)

IMPORTANT NOTICE

These particulars have been prepared upon information supplied by the Vendor and should be verified by your surveyors and solicitors. We have prepared these sales particulars as a general guide to give a broad description of the property. They are not intended to constitute part of an offer or contract. We have not carried out a structural survey and the services, appliances and specific fittings have not been tested. All photographs, measurements, floor plans and distances referred to are given as a guide only and should not be relied upon for the purchase of carpets or any other fixtures or fittings. Lease details service charge and ground rent (where applicable) are given as a guide only and should be checked and confirmed by your solicitor prior to exchange of contracts