

Burlington House, Park Lodge Avenue, West Drayton,

- Parkwest
- En suite
- Concierge service
- EPC Rating - D
- Newly refurbished
- Two bedrooms
- Balcony
- Residents gym
- Available June or May

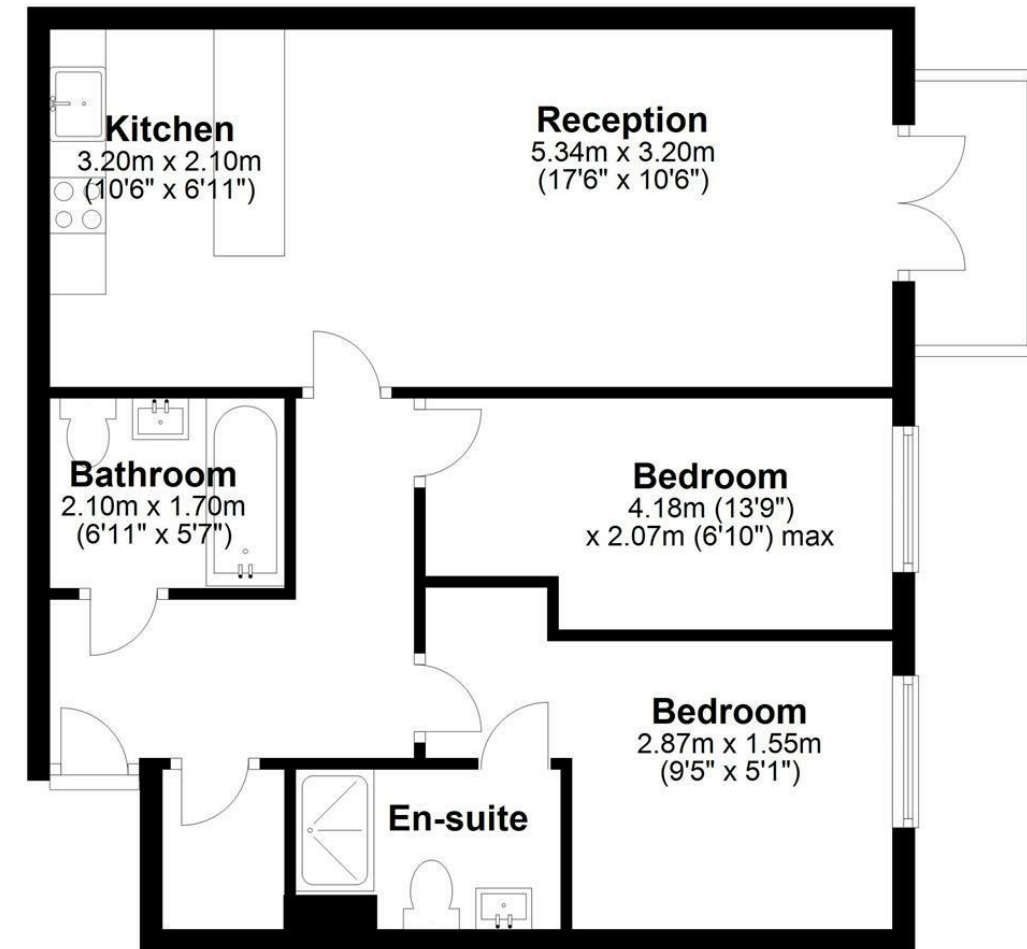
£2,150 PCM

Description

A superior and lavish two double bedroom apartment situated at the popular Parkwest development known for its beautiful communal gardens, twenty four hour concierge and resident gymnasium. The accommodation comprises of two double bedrooms with newly fitted carpet, open plan living room, kitchen with appliances, three piece bathroom suite, en suite shower room and private balcony. Fully refurbished including new carpets, light fittings, new furniture and large 80 inch TV screen. Presented furnished and available June, can be made available for May.

First Floor

Approx. 62.2 sq. metres (669.8 sq. feet)



Total area: approx. 62.2 sq. metres (669.8 sq. feet)

IMPORTANT NOTICE

These particulars have been prepared upon information supplied by the Vendor and should be verified by your surveyors and solicitors. We have prepared these sales particulars as a general guide to give a broad description of the property. They are not intended to constitute part of an offer or contract. We have not carried out a structural survey and the services, appliances and specific fittings have not been tested. All photographs, measurements, floor plans and distances referred to are given as a guide only and should not be relied upon for the purchase of carpets or any other fixtures or fittings. Lease details service charge and ground rent (where applicable) are given as a guide only and should be checked and confirmed by your solicitor prior to exchange of contracts