



Burlington House, 2 Park Lodge Avenue, West Drayton,

- Parkwest
- Furnished
- Parking
- Two bedroom Penthouse
- Available NOW
- EPC Rating- C

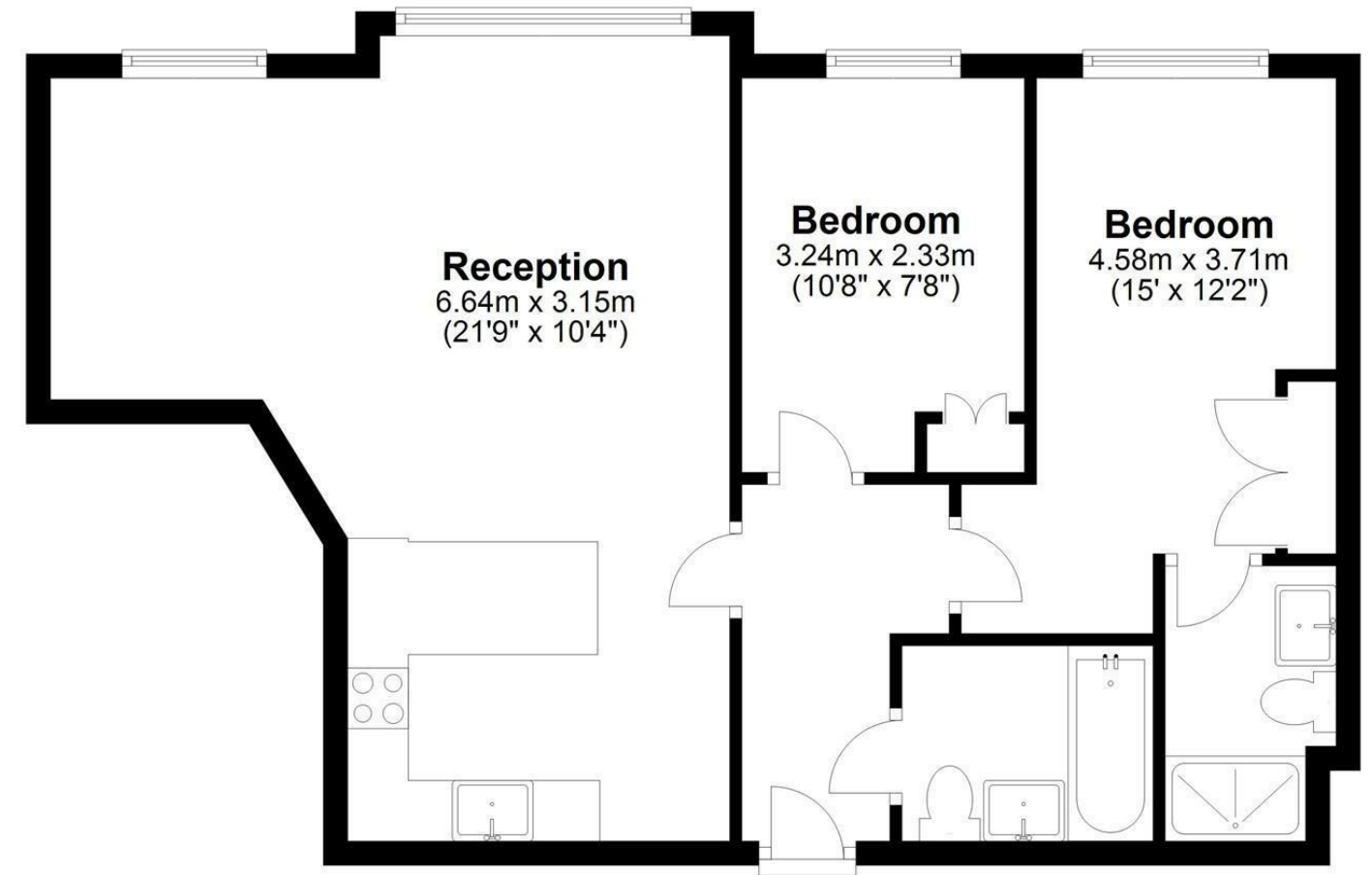
£1,995 PCM

Description

An exceptional two bedroom top floor apartment located in a popular and prestigious development, Parkwest. Furnished to a high standard including all the main furniture, large flat screen TV, new carpets throughout as one would expect in a modern apartment. Residents gym, concierge service and parking. Must be seen and available NOW

Fourth Floor

Approx. 60.0 sq. metres (645.4 sq. feet)



Total area: approx. 60.0 sq. metres (645.4 sq. feet)

IMPORTANT NOTICE

These particulars have been prepared upon information supplied by the Vendor and should be verified by your surveyors and solicitors. We have prepared these sales particulars as a general guide to give a broad description of the property. They are not intended to constitute part of an offer or contract. We have not carried out a structural survey and the services, appliances and specific fittings have not been tested. All photographs, measurements, floor plans and distances referred to are given as a guide only and should not be relied upon for the purchase of carpets or any other fixtures or fittings. Lease details service charge and ground rent (where applicable) are given as a guide only and should be checked and confirmed by your solicitor prior to exchange of contracts