

Egret House, 108 Wraysbury Drive, West Drayton, UB7

- Waterside Development
- Furnished
- En -suite
- EPC Rating - C
- Second floor
- Parking
- Available for July

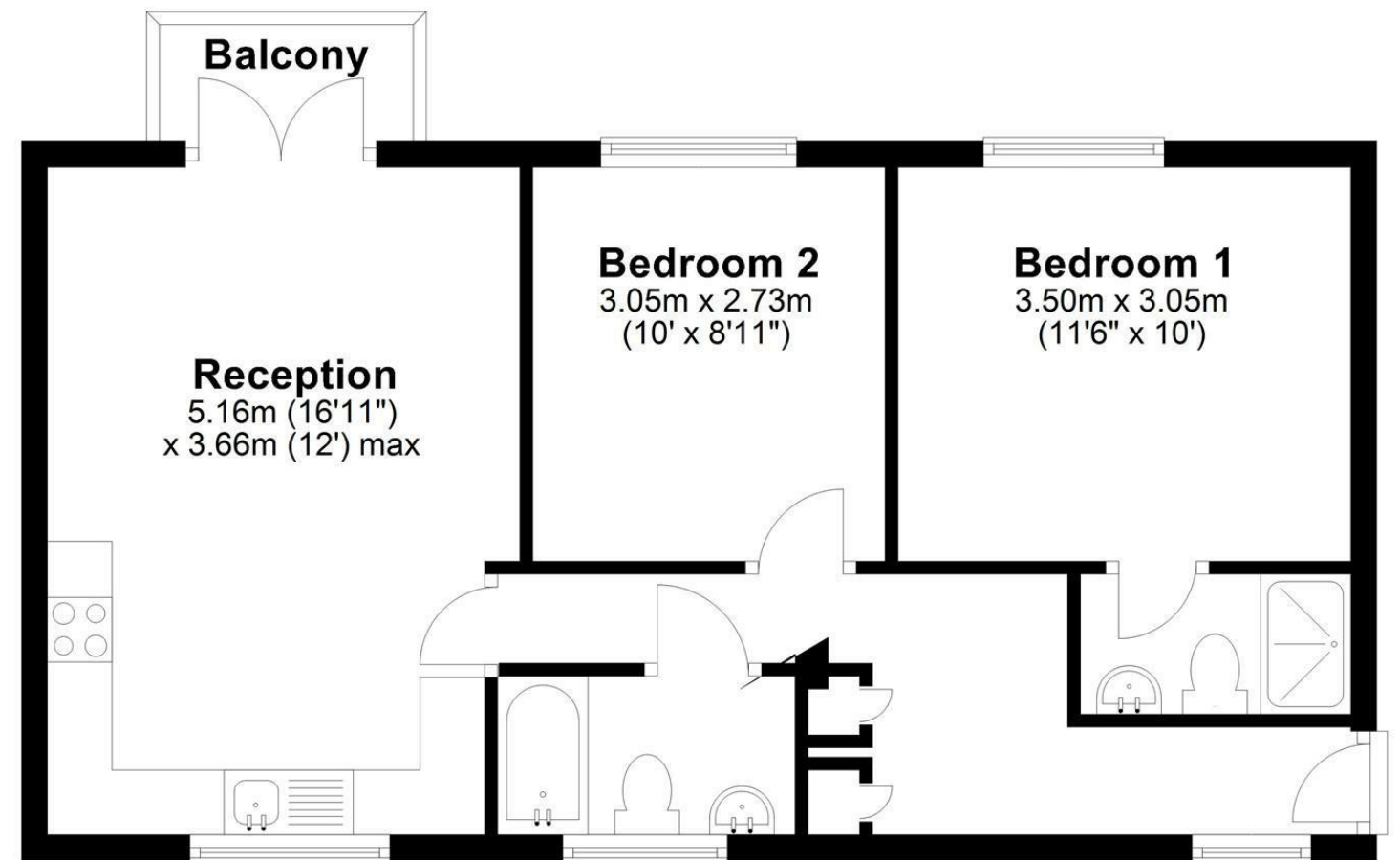
£1,750 PCM

Description

A two double bedroom second floor apartment situated on a popular development. The accommodation comprises entrance hall, living room open plan to modern fitted kitchen area, bathroom and two double bedrooms (master bedroom with en-suite shower room). The property benefits from double glazing, gas central heating, landscaped communal gardens providing access to the canal and allocated parking. Located within walking distance of West Drayton High Street with its day to day shops, West Drayton Train station, local bus routes and within easy access of Hillingdon Hospital, Heathrow airport. Available for July.

Second Floor

Approx. 52.1 sq. metres (560.7 sq. feet)



Total area: approx. 52.1 sq. metres (560.7 sq. feet)

IMPORTANT NOTICE

These particulars have been prepared upon information supplied by the Vendor and should be verified by your surveyors and solicitors. We have prepared these sales particulars as a general guide to give a broad description of the property. They are not intended to constitute part of an offer or contract. We have not carried out a structural survey and the services, appliances and specific fittings have not been tested. All photographs, measurements, floor plans and distances referred to are given as a guide only and should not be relied upon for the purchase of carpets or any other fixtures or fittings. Lease details service charge and ground rent (where applicable) are given as a guide only and should be checked and confirmed by your solicitor prior to exchange of contracts