



GRIFFIN

THE PROPERTY PEOPLE



Vexil Close , Purfleet-On-Thames, RM19 1SG

Asking price £160,000

****CHAIN FREE****90 YEAR LEASE****WATTS WOOD AREA****

Griffin are pleased to present to you this one bedroom apartment in the popular Watts Wood development in Purfleet; which is ideally situated for access to the A13, M25 junction 30/31, local train stations and Lakeside Shopping Centre.

The property comprises into an entrance hallway leading to a well-maintained reception area with a bay window. The kitchen is partly partitioned for separate but open plan feel. At the other side of the hall you are presented with a double bedroom and a bathroom. Another benefit to the property is that it has an allocated car port in the car park.

This flat is ideal for a first time buyer or an investor looking to get a good return on a property.

Call the sales team today...

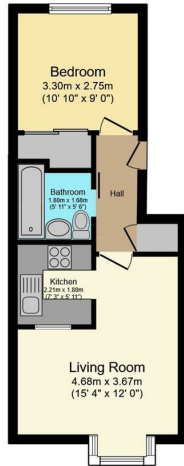
- 90 YEAR LEASE
- WATTS WOOD ESTATE
- ONE DOUBLE BEDROOM
- EPC D:68
- ONE ALLOCATED PARKING SPACE
- DOUBLE

Viewing

Please contact our Grays Sales Office on 01375 397872 if you wish to arrange a viewing appointment for this property or require further information.



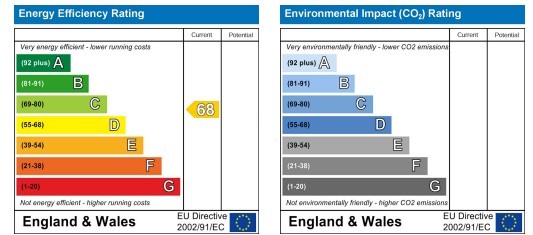
Floor Plan



Area Map

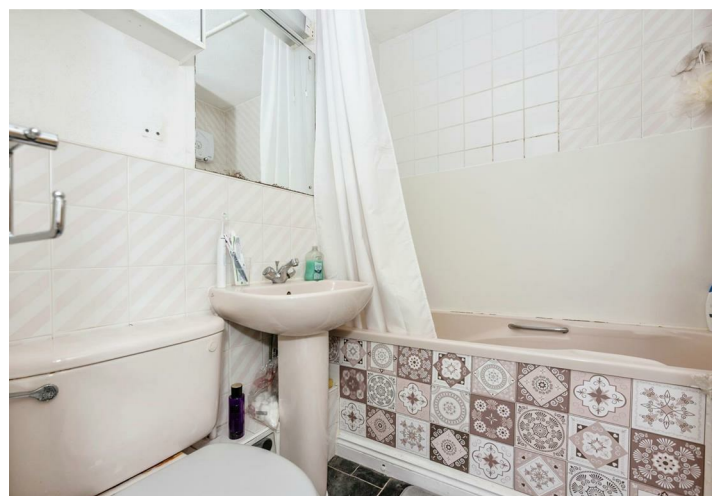


Energy Efficiency Graph



Total floor area 33.0 m² (355 sq.ft.) approx

This floor plan is for illustrative purposes only. It is not drawn to scale. Any measurements, floor areas (including any total floor area), openings and orientation are approximate. No details are guaranteed, they cannot be relied upon for any purpose and they do not form part of any agreement. No liability is taken for any error, omission or misstatement. A party must rely upon its own inspection(s). Powered by www.focalagent.com



These particulars, whilst believed to be accurate are set out as a general outline only for guidance and do not constitute any part of an offer or contract. Intending purchasers should not rely on them as statements of representation of fact, but must satisfy themselves by inspection or otherwise as to their accuracy. No person in this firm's employment has the authority to make or give any representation or warranty in respect of the property.