



GRIFFIN
THE PROPERTY PEOPLE



Pullman Square , Grays, RM17 6FN

Asking price £190,000

****BUILT IN 2020****ONE BEDROOM****90 YARDS FROM GRAYS C2C****

Griffin are excited to present to you this fantastic 1 bed apartment in the heart of Grays. Being built in 2020, the property has a modern interior, including an open plan kitchen - living area with spotlights and a Juliet balcony.

The property is located on the first floor and the apartment building has a lift, making it accessible. As well as this there is a gated, secure car park.

Just 90 yards from Grays C2C the flat is excellent for anybody who needs to commute, to add to this the station is just at the end of Grays high street, hosting many shops and amenities.

Call the sales team today to avoid disappointment...

Viewing

Please contact our Grays Sales Office on 01375 397872 if you wish to arrange a viewing appointment for this property or require further information.



1



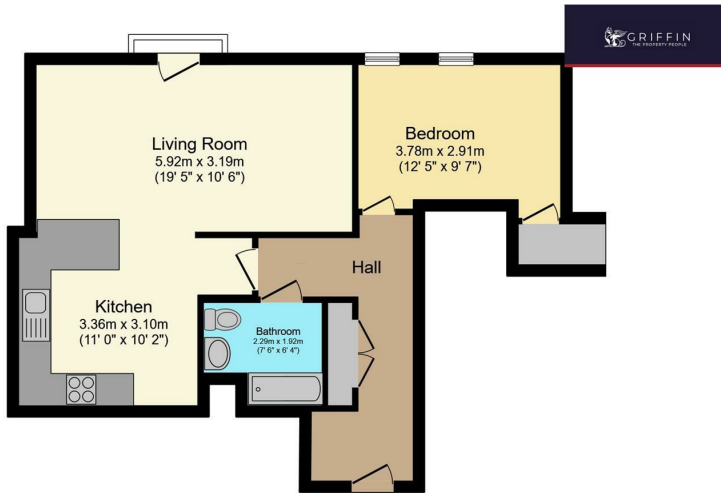
1



1



Floor Plan



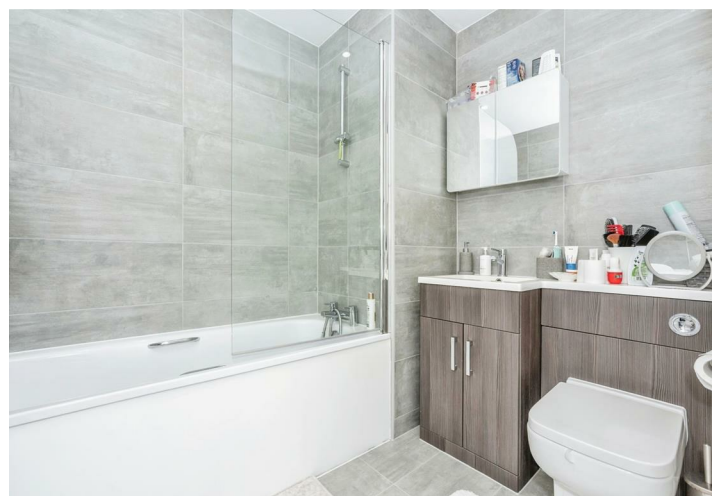
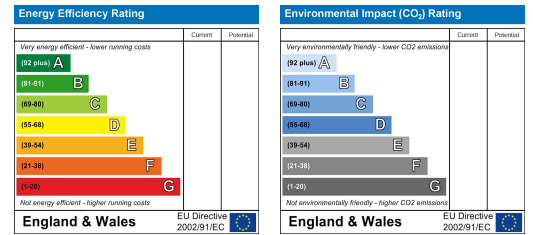
Total floor area 56.0 m² (603 sq.ft.) approx

This floor plan is for illustrative purposes only. It is not drawn to scale. Any measurements, floor areas (including any total floor area), openings and orientation are approximate. No details are guaranteed, they cannot be relied upon for any purpose and they do not form part of any agreement. No liability is taken for any error, omission or misstatement. A party must rely upon its own inspection(s). Powered by www.focalagent.com

Area Map



Energy Efficiency Graph



These particulars, whilst believed to be accurate are set out as a general outline only for guidance and do not constitute any part of an offer or contract. Intending purchasers should not rely on them as statements of representation of fact, but must satisfy themselves by inspection or otherwise as to their accuracy. No person in this firm's employment has the authority to make or give any representation or warranty in respect of the property.