



GRIFFIN

THE PROPERTY PEOPLE



Crescent Avenue Little Thurrock, Grays, RM17 6AZ

Guide price £450,000

**** FOUR DOUBLE BEDROOMS **** GUIDE PRICE £450,000 - £475,000 ****
GARAGE WITH CONVERSION POTENTIAL **** WELL PRESENTED ****

Griffin are delighted to bring to market this well presented FOUR DOUBLE BEDROOM semi detached house situated within this popular turning of Little Thurrock and being ideally placed for local primary schools, bus routes and the A13 London to Southend carriage way.

The property itself benefits from a good sized lounge, kitchen with an offset dining area, cloakroom, parking for several vehicles, and a large garage that has the potential to convert into an annex. All these benefits do not do the property justice, and we certainly would recommend viewing the house at your earliest convenience to avoid certain disappointment.

Call the sales team today.....

Viewing

Please contact our Grays Sales Office on 01375 397872 if you wish to arrange a viewing appointment for this property or require further information.

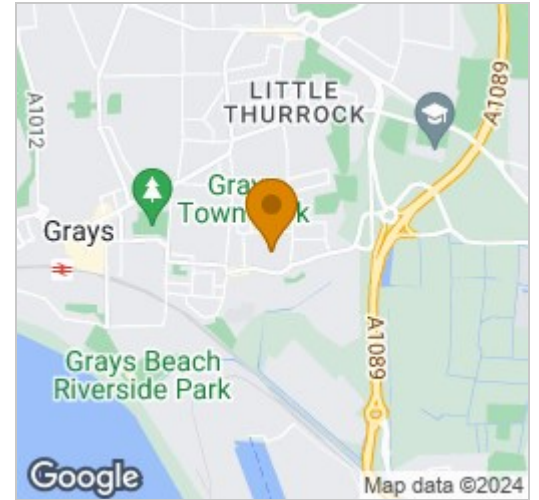
- Semi Detached
- Double Bedrooms
- Dining Room/Kitchen
- Garage With Potential
- Cloakroom
- Popular Location
- Well Presented
- Viewing Advised
- EPC: C75



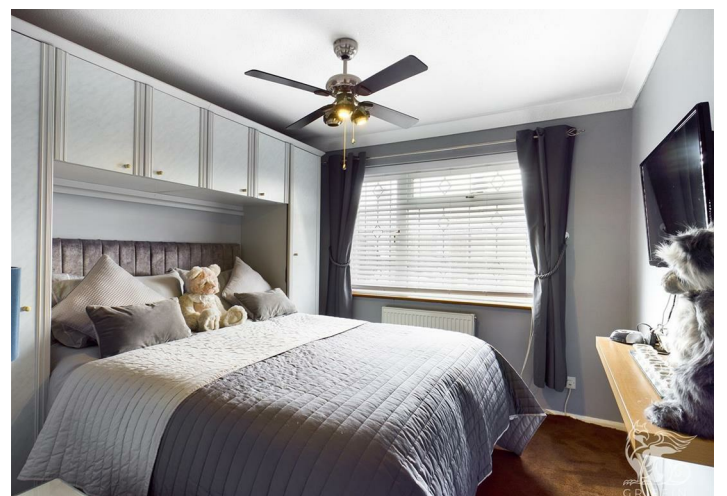
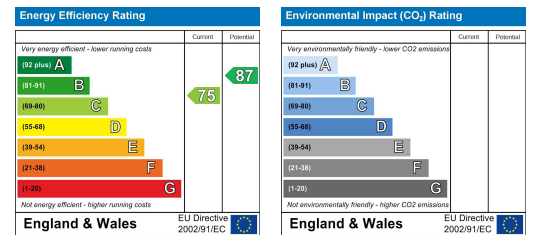
Floor Plan



Area Map



Energy Efficiency Graph



These particulars, whilst believed to be accurate are set out as a general outline only for guidance and do not constitute any part of an offer or contract. Intending purchasers should not rely on them as statements of representation of fact, but must satisfy themselves by inspection or otherwise as to their accuracy. No person in this firm's employment has the authority to make or give any representation or warranty in respect of the property.