



GRIFFIN

THE PROPERTY PEOPLE



Harlow Road, Rainham, RM13 7UB

£2,400



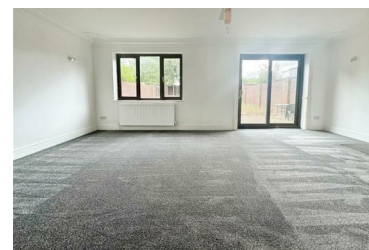
RENT: £2400.00 - FIVE WEEK DEPOSIT: £2769.00

AVAILABLE NOW

We are delighted to present this elegant, detached property available To Let in excellent condition. This substantial family home boasts six well-proportioned bedrooms and two bathrooms, making it the perfect space for families.

The property offers a range of unique features including a garage and off-street parking facilities. With an EPC rating of C, this home provides an energy-efficient environment, perfect for a contemporary lifestyle.

- AVAILABLE NOW
- SPACIOUS PROPERTY
- THREE BATHROOMS
- OFF STREET PARKING
- PERFECT FAMILY HOME
- SIX BEDROOMS
- GARAGE
- REAR GARDEN



4-6 Queensgate Centre, Orsett Road, Grays, Essex, RM17 5DF

T: 01375 397872 | E: lettings@griffingroup.co.uk

www.griffin-grays.co.uk