



# GRIFFIN

THE PROPERTY PEOPLE



## Essex Gardens

Linford, Stanford-Le-Hope, SS17 0QD

Asking price £330,000

Griffin are Delighted to offer For Sale as part of our Rightbuyers Protection Scheme is this Two Bedroom Semi-Detached Bungalow in Linford. Properties in this road are rarely available and are very popular so an early internal viewing is Highly Recommended.

Accommodation comprises Entrance Hall, Two Bedrooms, Shower room, Lounge and Kitchen.

The property benefits from Double Glazing, gas heating, rear garden and Off street parking to front.

- Rightbuyers Protection
- Two Bedroom
- Semi-Detached
- Off Street Parking
- Lounge
- Kitchen
- Rear Garden

### Viewing

Please contact our Grays Sales Office on 01375 397872 if you wish to arrange a viewing appointment for this property or require further information.



2



1

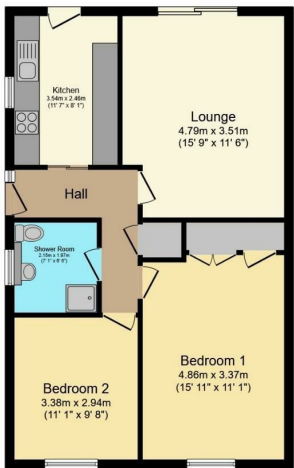


1



D

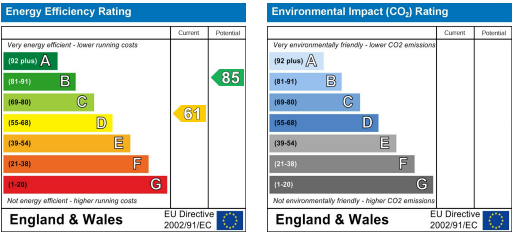
Floor Plan



Area Map



Energy Efficiency Graph



Total floor area 67.4 m<sup>2</sup> (726 sq.ft.) approx

This floor plan is for illustrative purposes only. It is not drawn to scale. Any measurements, floor areas (including any total floor area), openings and orientation are approximate. No details are guaranteed, they cannot be relied upon for any purpose and they do not form part of any agreement. No liability is taken for any error, omission or misstatement. A party must rely upon its own inspection(s). Powered by [www.focalagent.com](http://www.focalagent.com)



These particulars, whilst believed to be accurate are set out as a general outline only for guidance and do not constitute any part of an offer or contract. Intending purchasers should not rely on them as statements of representation of fact, but must satisfy themselves by inspection or otherwise as to their accuracy. No person in this firms employment has the authority to make or give any representation or warranty in respect of the property.